

Integrin b1(CD29) Antibody

Catalog No: #21614

Package Size: #21614-1 50ul #21614-2 100ul

Orders: order@signalwayantibody.com

Support: tech@signalwayantibody.com

Description

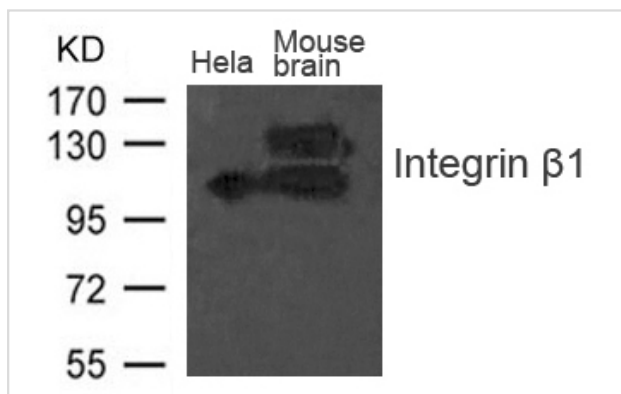
Product Name	Integrin b1(CD29) Antibody
Host Species	Rabbit
Clonality	Polyclonal
Purification	Antibodies were produced by immunizing rabbits with synthetic peptide and KLH conjugates. Antibodies were purified by affinity-chromatography using epitope-specific peptide.
Applications	WB
Species Reactivity	Hu Ms Rt
Specificity	The antibody detects endogenous level of total Integrin b1 (CD29) protein.
Immunogen Type	Peptide-KLH
Immunogen Description	Peptide sequence around aa.790~794 (V-V-N-P-K) derived from Human Integrin b1 (CD29).
Target Name	Integrin b1(CD29)
Other Names	FNRB; MDF2; VLAB; MSK12; ITGB1
Accession No.	Swiss-Prot: P05556NCBI Protein: NP_002202.2
Uniprot	P05556
GeneID	3688;
Concentration	1.0mg/ml
Formulation	Supplied at 1.0mg/mL in phosphate buffered saline (without Mg ²⁺ and Ca ²⁺), pH 7.4, 150mM NaCl, 0.02% sodium azide and 50% glycerol.
Storage	Store at -20°C for long term preservation (recommended). Store at 4°C for short term use.

Application Details

Predicted MW: 115 135kd

Western blotting: 1:500~1:1000

Images



Western blot analysis of extract from Mouse brain tissue and HeLa cells using Integrin b1(CD29) Antibody #21614

Background

Integrins α -1/ β -1, α -2/ β -1, α -10/ β -1 and α -11/ β -1 are receptors for collagen. Integrins α -1/ β -1 and α -2/ β -2 recognize the proline-hydroxylated sequence G-F-P-G-E-R in collagen. Integrins α -2/ β -1, α -3/ β -1, α -4/ β -1, α -5/ β -1, α -8/ β -1, α -10/ β -1, α -11/ β -1 and α -V/ β -1 are receptors for fibronectin. α -4/ β -1 recognizes one or more domains within the alternatively spliced CS-1 and CS-5 regions of fibronectin. Integrin α -5/ β -1 is a receptor for fibrinogen. Integrin α -1/ β -1, α -2/ β -1, α -6/ β -1 and α -7/ β -1 are receptors for laminin. Integrin α -4/ β -1 is a receptor for VCAM1. It recognizes the sequence Q-I-D-S in VCAM1. Integrin α -9/ β -1 is a receptor for VCAM1, cytotactin and osteopontin. It recognizes the sequence A-E-I-D-G-I-E-L in cytotactin. Integrin α -3/ β -1 is a receptor for epiligrin, thrombospondin and CSPG4. α -3/ β -1 may mediate with LGALS3 the stimulation by CSPG4 of endothelial cells migration. Integrin α -V/ β -1 is a receptor for vitronectin. Beta-1 integrins recognize the sequence R-G-D in a wide array of ligands. Isoform beta-1B interferes with isoform beta-1A resulting in a dominant negative effect on cell adhesion and migration (in vitro). In case of HIV-1 infection, the interaction with extracellular viral Tat protein seems to enhance angiogenesis in Kaposi's sarcoma lesions. When associated with α -7/ β -1 integrin, regulates cell adhesion and laminin matrix deposition. Involved in promoting endothelial cell motility and angiogenesis. May be involved in up-regulation of the activity of kinases such as PKC via binding to KRT1. Together with KRT1 and GNB2L1/RACK1, serves as a platform for SRC activation or inactivation. Plays a mechanistic adhesive role during telophase, required for the successful completion of cytokinesis

Balzac F., Retta S.F., Albini A., Melchiorri A., Koteliansky V.E., Geuna M. J. Cell Biol. 127:557-565(1994)

Chuang N.N., Huang C.C. Biochem. Soc. Trans. 35:1292-1294(2007)

Pellinen T., Tuomi S., Arjonen A., Wolf M. J. Dev. Cell 15:371-385(2008)

Note: This product is for in vitro research use only