

Foxj1(HFH4) Antibody

Catalog No: #21610

Package Size: #21610-1 50ul #21610-2 100ul

Orders: order@signalwayantibody.comSupport: tech@signalwayantibody.com

Description

Product Name	Foxj1(HFH4) Antibody
Host Species	Rabbit
Clonality	Polyclonal
Purification	Antibodies were produced by immunizing rabbits with synthetic peptide and KLH conjugates. Antibodies were purified by affinity-chromatography using epitope-specific peptide.
Applications	WB IHC IF
Species Reactivity	Hu Ms Rt
Specificity	The antibody detects endogenous level of total Foxj1 (HFH4) protein.
Immunogen Type	Peptide-KLH
Immunogen Description	Peptide sequence around aa.413~417(D-W-A-S-V) derived from Human Foxj1 (HFH4).
Target Name	Foxj1(HFH4)
Other Names	HFH4; HFH-4; FKHL13
Accession No.	Swiss-Prot: Q92949NCBI Protein: NP_001445.2
Uniprot	Q92949
GeneID	2302;
Concentration	1.0mg/ml
Formulation	Supplied at 1.0mg/mL in phosphate buffered saline (without Mg ²⁺ and Ca ²⁺), pH 7.4, 150mM NaCl, 0.02% sodium azide and 50% glycerol.
Storage	Store at -20°C for long term preservation (recommended). Store at 4°C for short term use.

Application Details

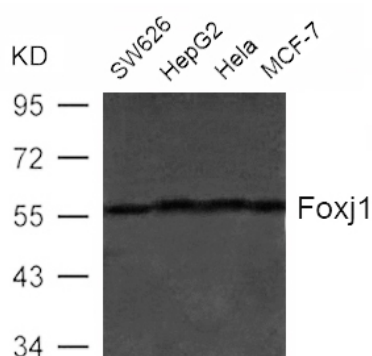
Predicted MW: 58kd

Western blotting: 1:500~1:1000

Immunofluorescence: 1:50~1:200

Immunohistochemistry: 1:50~1:200

Images



Western blot analysis of extract from SW626, HepG2, HeLa and MCF-7 cells using Foxj1(HFH4) Antibody #21610

Background

May play an important role in cell fate determination during lung development and in spermatogenesis.

Li C.-S., Chae S.-C., Lee J.-H., Zhang Q., Chung H.-T.J. Hum. Genet. 51:292-297(2006)

Note: This product is for in vitro research use only