

AKR1B1 Antibody

Catalog No: #34403

Package Size: #34403-1 50ul #34403-2 100ul

Orders: order@signalwayantibody.com

Support: tech@signalwayantibody.com

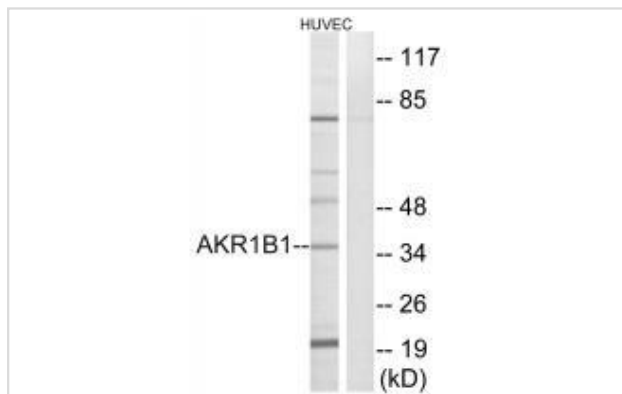
Description

Product Name	AKR1B1 Antibody
Host Species	Rabbit
Clonality	Polyclonal
Purification	The antibody was affinity-purified from rabbit antiserum by affinity-chromatography using epitope-specific immunogen.
Applications	WB
Species Reactivity	Hu Rt
Specificity	The antibody detects endogenous levels of total AKR1B1 protein.
Immunogen Type	Peptide
Immunogen Description	Synthesized peptide derived from internal of human AKR1B1.
Target Name	AKR1B1
Other Names	ADR; aldehyde reductase 1; aldo-keto reductase family 1; member B1; aldose reductase
Accession No.	Swiss-Prot: P15121NCBI Gene ID: 231
Uniprot	P15121
GeneID	231;
SDS-PAGE MW	36kd
Concentration	1.0mg/ml
Formulation	Rabbit IgG in phosphate buffered saline (without Mg ²⁺ and Ca ²⁺), pH 7.4, 150mM NaCl, 0.02% sodium azide and 50% glycerol.
Storage	Store at -20°C

Application Details

Western blotting: 1:500~1:3000

Images



Western blot analysis of extracts from HUVEC cells, using AKR1B1 antibody #34403.

Background

Catalyzes the NADPH-dependent reduction of a wide variety of carbonyl-containing compounds to their corresponding alcohols with a broad range of catalytic efficiencies.

Bohren K.M., J. Biol. Chem. 264:9547-9551(1989).

Chung S., J. Biol. Chem. 264:14775-14777(1989).

Graham A., Nucleic Acids Res. 17:8368-8368(1989).

Note: This product is for in vitro research use only