

Tubulin b-III Antibody

Catalog No: #21617

Package Size: #21617-1 50ul #21617-2 100ul

Orders: order@signalwayantibody.com

Support: tech@signalwayantibody.com

Description

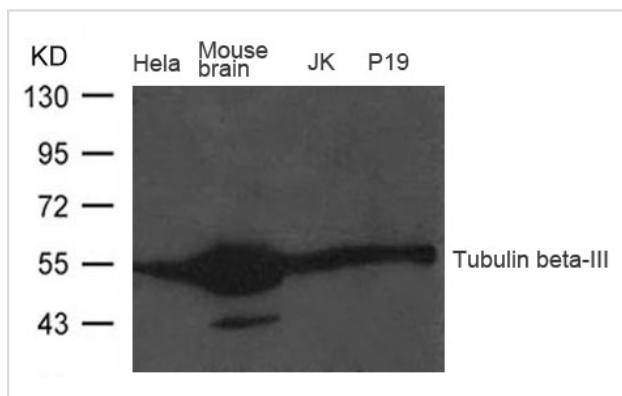
Product Name	Tubulin b-III Antibody
Host Species	Rabbit
Clonality	Polyclonal
Purification	Antibodies were produced by immunizing rabbits with synthetic peptide and KLH conjugates. Antibodies were purified by affinity-chromatography using epitope-specific peptide.
Applications	WB
Species Reactivity	Hu Ms
Specificity	The antibody detects endogenous level of total Tubulin b-III protein.
Immunogen Type	Peptide-KLH
Immunogen Description	Peptide sequence around aa.442~446(E-E-S-E-A) derived from Human Tubulin b-III.
Target Name	Tubulin b-III
Other Names	TUBB4; CFEOM3A; TUBB3
Accession No.	Swiss-Prot: Q13509NCBI Protein: NP_006077.2
Uniprot	Q13509
GeneID	10381;
Concentration	1.0mg/ml
Formulation	Supplied at 1.0mg/mL in phosphate buffered saline (without Mg ²⁺ and Ca ²⁺), pH 7.4, 150mM NaCl, 0.02% sodium azide and 50% glycerol.
Storage	Store at -20°C for long term preservation (recommended). Store at 4°C for short term use.

Application Details

Predicted MW: 55kd

Western blotting: 1:500~1:1000

Images



Western blot analysis of extract from Mouse brain tissue, HeLa, JK and P19 cells using Tubulin beta-III Antibody #21617

Background

Tubulin is the major constituent of microtubules. It binds two moles of GTP, one at an exchangeable site on the beta chain and one at a non-exchangeable site on the alpha-chain. TUBB3 plays a critical role in proper axon guidance and maintenance.

Tischfield M.A., Baris H.N., Wu C., Rudolph G. Cell 140:74-87(2010)

Katsetos C.D., Legido A., Perentes E., Mork S.J. J. Child Neurol. 18:851-866(2003)

Note: This product is for in vitro research use only