

APOL2 Antibody

Catalog No: #34432

Package Size: #34432-1 50ul #34432-2 100ul

Orders: order@signalwayantibody.com

Support: tech@signalwayantibody.com

Description

Product Name	APOL2 Antibody
Host Species	Rabbit
Clonality	Polyclonal
Purification	The antibody was affinity-purified from rabbit antiserum by affinity-chromatography using epitope-specific immunogen.
Applications	WB IHC IF
Species Reactivity	Hu
Specificity	The antibody detects endogenous levels of total APOL2 protein.
Immunogen Type	Peptide
Immunogen Description	Synthesized peptide derived from internal of human APOL2.
Target Name	APOL2
Other Names	apoL-II; apolipoprotein L-II; apolipoprotein-L2;
Accession No.	Swiss-Prot: Q9BQE5NCBI Gene ID: 23780
Uniprot	Q9BQE5
GeneID	23780;
SDS-PAGE MW	37kd
Concentration	1.0mg/ml
Formulation	Rabbit IgG in phosphate buffered saline (without Mg ²⁺ and Ca ²⁺), pH 7.4, 150mM NaCl, 0.02% sodium azide and 50% glycerol.
Storage	Store at -20°C

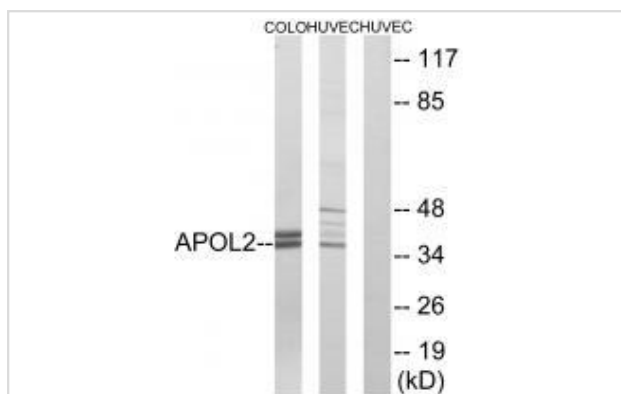
Application Details

Western blotting: 1:500~1:3000

Immunohistochemistry: 1:50~1:100

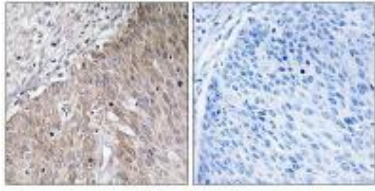
Immunofluorescence: 1:100~1:500

Images

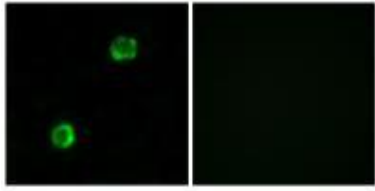


Western blot analysis of extracts from COLO cells and HUVEC cells, using APOL2 antibody #34432.

Immunohistochemistry analysis of paraffin-embedded human cervix carcinoma tissue using APOL2 antibody #34432.



Immunofluorescence analysis of MCF-7 cells, using APOL2 antibody #34432.



Background

May affect the movement of lipids in the cytoplasm or allow the binding of lipids to organelles.

Page N.M., Genomics 74:71-78(2001).

Duchateau P.N., J. Lipid Res. 42:620-630(2001).

Monajemi H., Genomics 79:539-546(2002).

Note: This product is for in vitro research use only