

ARG1 Antibody

Catalog No: #34437

Package Size: #34437-1 50ul #34437-2 100ul

Orders: order@signalwayantibody.com

Support: tech@signalwayantibody.com

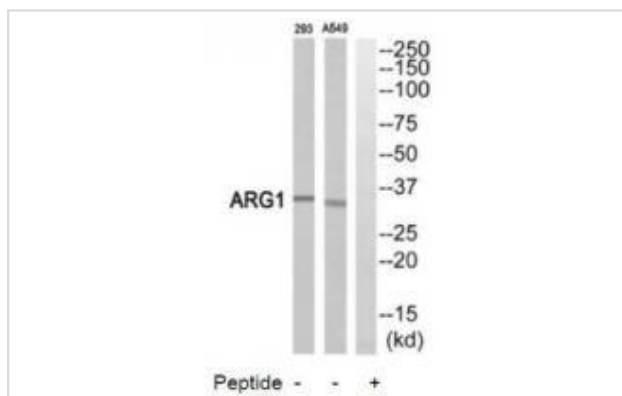
Description

Product Name	ARG1 Antibody
Host Species	Rabbit
Clonality	Polyclonal
Purification	The antibody was affinity-purified from rabbit antiserum by affinity-chromatography using epitope-specific immunogen.
Applications	WB
Species Reactivity	Hu
Specificity	The antibody detects endogenous levels of total ARG1 protein.
Immunogen Type	Peptide
Immunogen Description	Synthesized peptide derived from internal of human ARG1.
Target Name	ARG1
Other Names	AI; AI256583; Arg-1; ARG11; arginase 1
Accession No.	Swiss-Prot: P05089NCBI Gene ID: 383
Uniprot	P05089
GeneID	383;
SDS-PAGE MW	35kd
Concentration	1.0mg/ml
Formulation	Rabbit IgG in phosphate buffered saline (without Mg ²⁺ and Ca ²⁺), pH 7.4, 150mM NaCl, 0.02% sodium azide and 50% glycerol.
Storage	Store at -20°C

Application Details

Western blotting: 1:500~1:3000

Images



Western blot analysis of extracts from 293 cells and A549 cells, using ARG1 antibody #34437.

Background

Arginase catalyzes the hydrolysis of arginine to ornithine and urea. At least two isoforms of mammalian arginase exist (types I and II) which differ in their tissue distribution, subcellular localization, immunologic crossreactivity and physiologic function. The type I isoform encoded by this gene, is a cytosolic enzyme and expressed predominantly in the liver as a component of the urea cycle. Inherited deficiency of this enzyme results in argininemia, an autosomal recessive disorder characterized by hyperammonemia. Two transcript variants encoding different isoforms have been found for this gene.

Haraguchi Y., Proc. Natl. Acad. Sci. U.S.A. 84:412-415(1987).

Takiguchi M., Nucleic Acids Res. 16:8789-8802(1988).

Mungall A.J., Nature 425:805-811(2003).

Note: This product is for in vitro research use only