

## ARG2 Antibody

Catalog No: #34438

Package Size: #34438-1 50ul #34438-2 100ul

Orders: order@signalwayantibody.com

Support: tech@signalwayantibody.com

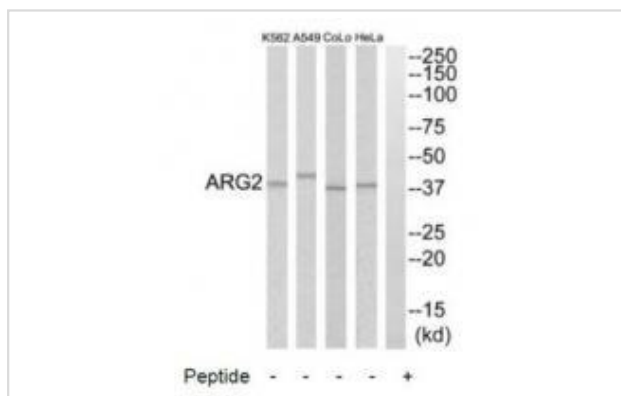
## Description

Product Name	ARG2 Antibody
Host Species	Rabbit
Clonality	Polyclonal
Purification	The antibody was affinity-purified from rabbit antiserum by affinity-chromatography using epitope-specific immunogen.
Applications	WB
Species Reactivity	Hu
Specificity	The antibody detects endogenous levels of total ARG2 protein.
Immunogen Type	Peptide
Immunogen Description	Synthesized peptide derived from C-terminal of human ARG2.
Target Name	ARG2
Other Names	Arginase-2 mitochondrial; Arginase II; Non-hepatic arginase; Kidney-type arginase;
Accession No.	Swiss-Prot: P78540NCBI Gene ID: 384
Uniprot	P78540
GeneID	384;
SDS-PAGE MW	38kd
Concentration	1.0mg/ml
Formulation	Rabbit IgG in phosphate buffered saline (without Mg <sup>2+</sup> and Ca <sup>2+</sup> ), pH 7.4, 150mM NaCl, 0.02% sodium azide and 50% glycerol.
Storage	Store at -20°C

## Application Details

Western blotting: 1:500~1:3000

## Images



Western blot analysis of extracts from HeLa cells, A549 cells, COLO205 cells and K562 cells, using ARG2 antibody #34438.

## Background

---

May play a role in the regulation of extra-urea cycle arginine metabolism and also in down-regulation of nitric oxide synthesis. Extrahepatic arginase functions to regulate L-arginine bioavailability to NO synthase. Since NO synthase is found in the penile corpus cavernosum smooth muscle, the clitoral corpus cavernosum and the vagina, arginase II plays a role in both male and female sexual arousal. It is therefore a potential target for the treatment of male and female sexual arousal disorders.

Gotoh T., FEBS Lett. 395:119-122(1996).

Vockley J.G., Genomics 38:118-123(1996).

Morris S.M. Jr., Gene 193:157-161(1997)

---

Note: This product is for in vitro research use only