

## CD22 Antibody

Catalog No: #21492

Package Size: #21492-1 50ul #21492-2 100ul

Orders: order@signalwayantibody.com

Support: tech@signalwayantibody.com

## Description

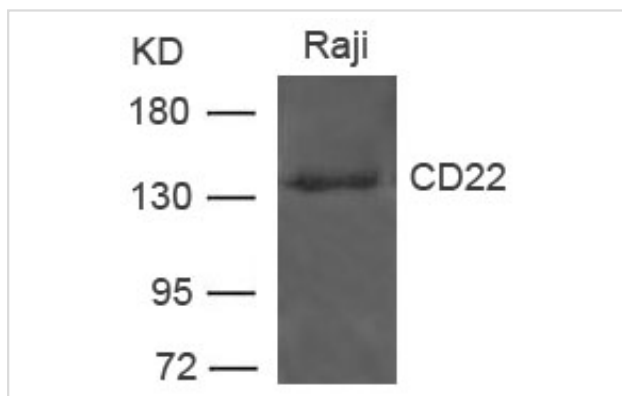
Product Name	CD22 Antibody
Host Species	Rabbit
Clonality	Polyclonal
Purification	Antibodies were produced by immunizing rabbits with synthetic peptide and KLH conjugates. Antibodies were purified by affinity-chromatography using epitope-specific peptide.
Applications	WB
Species Reactivity	Hu
Specificity	The antibody detects endogenous level of total CD22 protein.
Immunogen Type	Peptide-KLH
Immunogen Description	Peptide sequence around aa.839~843 (N-V-D-Y-V) derived from Human CD22.
Target Name	CD22
Other Names	SIGLEC2; FLJ22814; SIGLEC-2; MGC130020;
Accession No.	Swiss-Prot: P20273NCBI Protein: NP_001762.2
Uniprot	P20273
GeneID	933;
Concentration	1.0mg/ml
Formulation	Supplied at 1.0mg/mL in phosphate buffered saline (without Mg <sup>2+</sup> and Ca <sup>2+</sup> ), pH 7.4, 150mM NaCl, 0.02% sodium azide and 50% glycerol.
Storage	Store at -20°C for long term preservation (recommended). Store at 4°C for short term use.

## Application Details

Predicted MW: 140kd

Western blotting: 1:500~1:1000

## Images



Western blot analysis of extract from Raji cells using CD22 Antibody #21492

## Background

---

Mediates B-cell B-cell interactions. May be involved in the localization of B-cells in lymphoid tissues. Binds sialylated glycoproteins; one of which is CD45. Preferentially binds to  $\alpha$ -2,6-linked sialic acid. The sialic acid recognition site can be masked by cis interactions with sialic acids on the same cell surface. Upon ligand induced tyrosine phosphorylation in the immune response seems to be involved in regulation of B-cell antigen receptor signaling. Plays a role in positive regulation through interaction with Src family tyrosine kinases and may also act as an inhibitory receptor by recruiting cytoplasmic phosphatases via their SH2 domains that block signal transduction through dephosphorylation of signaling molecules.

Doody G.M., Justement L.B., Delibrias C.C., Matthews R.J., Lin J., Thomas M.L., Fearon D.T. *Science* 269:242-244(1995)

Tuscano J.M., Engel P., Tedder T.F., Agarwal A., Kehrl J.H. *Eur. J. Immunol.* 26:1246-1252(1996)

Law C.L., Sidorenko S.P., Chandran K.A., Zhao Z., Shen S.H., Fischer E.H., Clark E.A.J. *Exp. Med.* 183:547-560(1996)

---

Note: This product is for in vitro research use only