

ATG16L1 Antibody

Catalog No: #34474

Package Size: #34474-1 50ul #34474-2 100ul

Orders: order@signalwayantibody.com

Support: tech@signalwayantibody.com

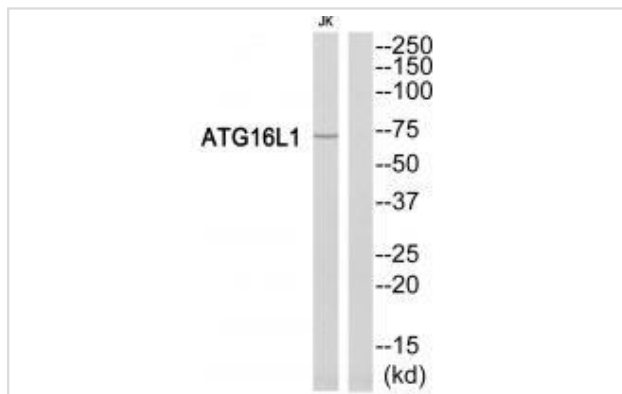
Description

Product Name	ATG16L1 Antibody
Host Species	Rabbit
Clonality	Polyclonal
Purification	The antibody was affinity-purified from rabbit antiserum by affinity-chromatography using epitope-specific immunogen.
Applications	WB
Species Reactivity	Hu
Specificity	The antibody detects endogenous levels of total ATG16L1 protein.
Immunogen Type	Peptide
Immunogen Description	Synthesized peptide derived from Internal of human ATG16L1.
Target Name	ATG16L1
Other Names	A16L1; APG16 autophagy 16-like; APG16-like 1; APG16L; APG16L beta
Accession No.	Swiss-Prot: Q676U5NCBI Gene ID: 55054
Uniprot	Q676U5
GeneID	55054;
SDS-PAGE MW	68kd
Concentration	1.0mg/ml
Formulation	Rabbit IgG in phosphate buffered saline (without Mg ²⁺ and Ca ²⁺), pH 7.4, 150mM NaCl, 0.02% sodium azide and 50% glycerol.
Storage	Store at -20°C

Application Details

Western blotting: 1:500~1:3000

Images



Western blot analysis of extracts from Jurkat cells, using ATG16L1 antibody #34474.

Background

Plays an essential role in autophagy: interacts with ATG12-ATG5 to mediate the conjugation of phosphatidylethanolamine (PE) to LC3 (MAP1LC3A, MAP1LC3B or MAP1LC3C), to produce a membrane-bound activated form of LC3 named LC3-II. Thereby, controls the elongation of the nascent autophagosomal membrane.

Zheng H., DNA Seq. 15:303-305(2004).

Hampe J., Nat. Genet. 39:207-211(2007).

Clark H.F., Genome Res. 13:2265-2270(2003).

Note: This product is for in vitro research use only