

B4GALT1 Antibody

Catalog No: #34492

Package Size: #34492-1 50ul #34492-2 100ul

Orders: order@signalwayantibody.comSupport: tech@signalwayantibody.com

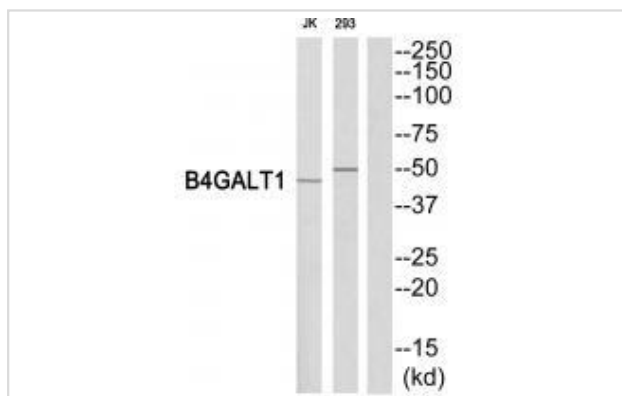
Description

Product Name	B4GALT1 Antibody
Host Species	Rabbit
Clonality	Polyclonal
Purification	The antibody was affinity-purified from rabbit antiserum by affinity-chromatography using epitope-specific immunogen.
Applications	WB
Species Reactivity	Hu Ms
Specificity	The antibody detects endogenous levels of total B4GALT1 protein.
Immunogen Type	Peptide
Immunogen Description	Synthesized peptide derived from C-terminal of human B4GALT1.
Target Name	B4GALT1
Other Names	b4Gal-T1; B4GALT1; B4GT1; Beta-1; 4-galactosyltransferase 1
Accession No.	Swiss-Prot: P15291NCBI Gene ID: 2683
Uniprot	P15291
GeneID	2683;
SDS-PAGE MW	44kd
Concentration	1.0mg/ml
Formulation	Rabbit IgG in phosphate buffered saline (without Mg ²⁺ and Ca ²⁺), pH 7.4, 150mM NaCl, 0.02% sodium azide and 50% glycerol.
Storage	Store at -20°C

Application Details

Western blotting: 1:500~1:3000

Images



Western blot analysis of extracts from Jurkat/293 cells, using B4GALT1 antibody #34492.

Background

The Golgi complex form catalyzes the production of lactose in the lactating mammary gland and could also be responsible for the synthesis of complex-type N-linked oligosaccharides in many glycoproteins as well as the carbohydrate moieties of glycolipids. The cell surface form functions as a recognition molecule during a variety of cell to cell and cell to matrix interactions, as those occurring during development and egg fertilization, by binding to specific oligosaccharide ligands on opposing cells or in the extracellular matrix.

Masri K.A., *Biochem. Biophys. Res. Commun.* 157:657-663(1988).

Watzel G., *Nucleic Acids Res.* 18:7174-7174(1990).

Mengle-Gaw L., *Biochem. Biophys. Res. Commun.* 176:1269-1276(1991).

Note: This product is for in vitro research use only