

## HMGA2 Antibody

Catalog No: #21623

Package Size: #21623-1 50ul #21623-2 100ul

Orders: order@signalwayantibody.com

Support: tech@signalwayantibody.com

## Description

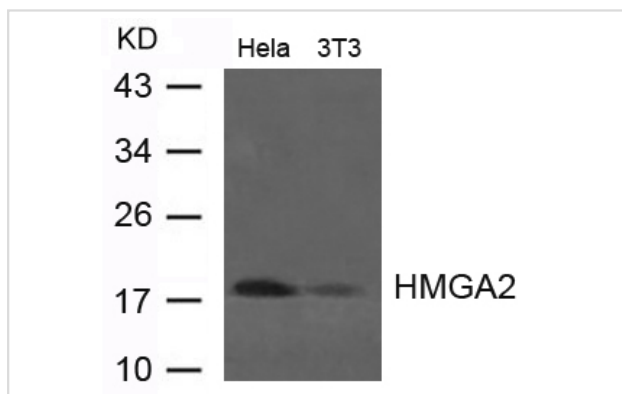
|                       |   |
|-----------------------|---|
| Product Name          | HMGA2 Antibody  |
| Host Species          | Rabbit  |
| Clonality             | Polyclonal  |
| Purification          | Antibodies were produced by immunizing rabbits with synthetic peptide and KLH conjugates. Antibodies were purified by affinity-chromatography using epitope-specific peptide. |
| Applications          | WB  |
| Species Reactivity    | Hu Ms Rt  |
| Specificity           | The antibody detects endogenous level of total HMGA2 protein.   |
| Immunogen Type        | Peptide-KLH   |
| Immunogen Description | Peptide sequence around aa. 6~10(E-G-A-G-Q) derived from Human HMGA2.   |
| Target Name           | HMGA2   |
| Other Names           | HMGIC; HMGI-C; STQTL9; BABL; LIPO   |
| Accession No.         | Swiss-Prot: P52926NCBI Protein: NP_003474.1   |
| Uniprot               | P52926  |
| GeneID                | 8091;   |
| Concentration         | 1.0mg/ml  |
| Formulation           | Supplied at 1.0mg/mL in phosphate buffered saline (without Mg <sup>2+</sup> and Ca <sup>2+</sup> ), pH 7.4, 150mM NaCl, 0.02% sodium azide and 50% glycerol.                  |
| Storage               | Store at -20°C for long term preservation (recommended). Store at 4°C for short term use.   |

## Application Details

Predicted MW: 18kd

Western blotting: 1:500

## Images



Western blot analysis of extract from HeLa and 3T3 cells using HMGA2 Antibody #21623

## Background

---

Functions as a transcriptional regulator. Functions in cell cycle regulation through CCNA2.

---

Note: This product is for in vitro research use only