

## MELK Antibody

Catalog No: #21625

Package Size: #21625-1 50ul #21625-2 100ul

Orders: order@signalwayantibody.com

Support: tech@signalwayantibody.com

## Description

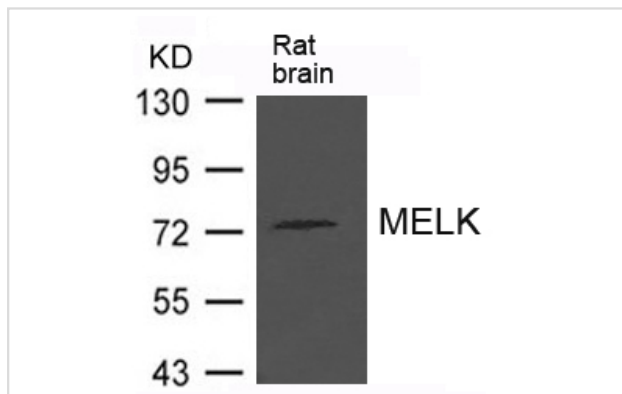
Product Name	MELK Antibody
Host Species	Rabbit
Clonality	Polyclonal
Purification	Antibodies were produced by immunizing rabbits with synthetic peptide and KLH conjugates. Antibodies were purified by affinity-chromatography using epitope-specific peptide.
Applications	WB
Species Reactivity	Hu Ms Rt
Specificity	The antibody detects endogenous level of total MELK protein.
Immunogen Type	Peptide-KLH
Immunogen Description	Peptide sequence around aa.626~630 (I-R-R-Q-R) derived from Human MELK.
Target Name	MELK
Other Names	hPK38; KIAA0175; hMELK
Accession No.	Swiss-Prot: Q14680NCBI Protein: NP_055606.1
Uniprot	Q14680
GeneID	9833;
Concentration	1.0mg/ml
Formulation	Supplied at 1.0mg/mL in phosphate buffered saline (without Mg <sup>2+</sup> and Ca <sup>2+</sup> ), pH 7.4, 150mM NaCl, 0.02% sodium azide and 50% glycerol.
Storage	Store at -20°C for long term preservation (recommended). Store at 4°C for short term use.

## Application Details

Predicted MW: 74kd

Western blotting: 1:500

## Images



Western blot analysis of extract from Rat brain tissue using MELK Antibody #21625

## Background

---

Phosphorylates ZNF622 and may contribute to its redirection to the nucleus. May be involved in the inhibition of spliceosome assembly during mitosis.

Seong H.-A., Gil M., Kim K.-T., Kim S.-J., Ha H. *Biochem. J.* 361:597-604(2002)

Vulsteke V., Beullens M., Boudrez A., Keppens S. *Biol. Chem.* 279:8642-8647(2004)

---

Note: This product is for in vitro research use only