

## Rab5 Antibody

Catalog No: #21628

Package Size: #21628-1 50ul #21628-2 100ul

Orders: order@signalwayantibody.com

Support: tech@signalwayantibody.com

## Description

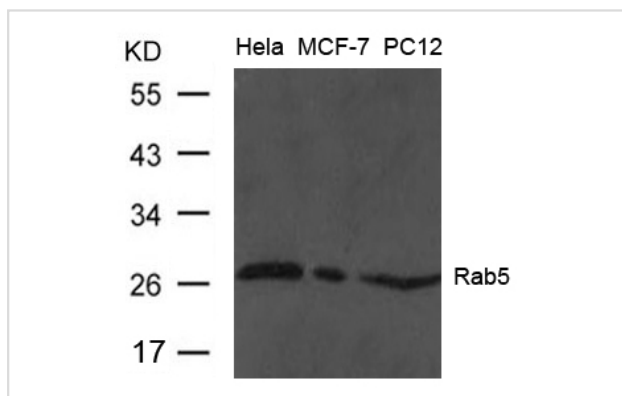
Product Name	Rab5 Antibody
Host Species	Rabbit
Clonality	Polyclonal
Purification	Antibodies were produced by immunizing rabbits with synthetic peptide and KLH conjugates. Antibodies were purified by affinity-chromatography using epitope-specific peptide.
Applications	WB
Species Reactivity	Hu Ms Rt
Specificity	The antibody detects endogenous level of total Rab5 protein.
Immunogen Type	Peptide-KLH
Immunogen Description	Peptide sequence around aa.188~192( N-P-G-A-N) derived from Human Rab5.
Target Name	Rab5
Other Names	RAB5A
Accession No.	Swiss-Prot: P20339NCBI Protein: NP_004153.2
Uniprot	P20339
GeneID	5868;
Concentration	1.0mg/ml
Formulation	Supplied at 1.0mg/mL in phosphate buffered saline (without Mg <sup>2+</sup> and Ca <sup>2+</sup> ), pH 7.4, 150mM NaCl, 0.02% sodium azide and 50% glycerol.
Storage	Store at -20°C for long term preservation (recommended). Store at 4°C for short term use.

## Application Details

Predicted MW: 25kd

Western blotting: 1:500~1:1000

## Images



Western blot analysis of extract from HeLa, MCF and PC12 cells using Rab5 Antibody #21628

## Background

---

Required for the fusion of plasma membranes and early endosomes.

Callaghan J.M., Nixon S., Bucci C., Toh B.-H., Stenmark H. *Eur. J. Biochem.* 265:361-366(1999) Hoffenberg S., Liu X., Nikolova L., Hall H.S., Dai W., Baughn R.E., Dickey B.F., Barbieri M.A., Aballay A., Stahl P.D., Knoll B.J.J. *Biol. Chem.* 275:24661-24669(2000)

---

Note: This product is for in vitro research use only