

## CA5B Antibody

Catalog No: #34542

Package Size: #34542-1 50ul #34542-2 100ul

Orders: order@signalwayantibody.com

Support: tech@signalwayantibody.com

## Description

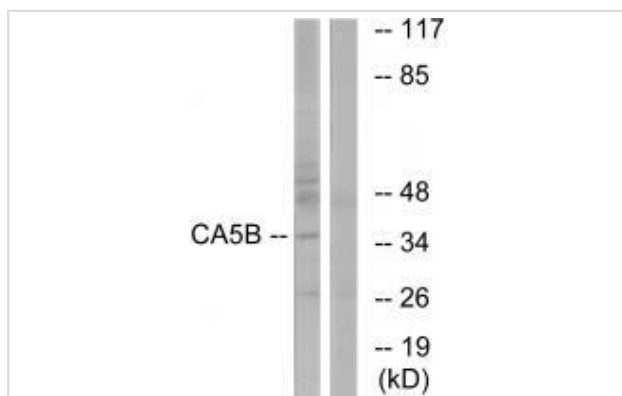
Product Name	CA5B Antibody
Host Species	Rabbit
Clonality	Polyclonal
Purification	The antibody was affinity-purified from rabbit antiserum by affinity-chromatography using epitope-specific immunogen.
Applications	WB IHC IF
Species Reactivity	Hu Ms
Specificity	The antibody detects endogenous levels of total CA5B protein.
Immunogen Type	Peptide
Immunogen Description	Synthesized peptide derived from internal of human CA5B.
Target Name	CA5B
Other Names	Carbonic anhydrase 5B; mitochondrial [Precursor]; EC 4.2.1.1; Carbonic anhydrase VB; CA-VB
Accession No.	Swiss-Prot: Q9Y2D0NCBI Gene ID: 11238
Uniprot	Q9Y2D0
GeneID	11238;
SDS-PAGE MW	38kd
Concentration	1.0mg/ml
Formulation	Rabbit IgG in phosphate buffered saline (without Mg <sup>2+</sup> and Ca <sup>2+</sup> ), pH 7.4, 150mM NaCl, 0.02% sodium azide and 50% glycerol.
Storage	Store at -20°C

## Application Details

Western blotting: 1:500~1:3000

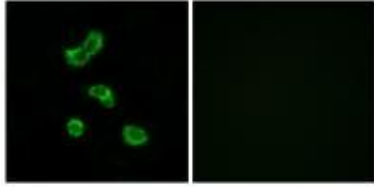
Immunofluorescence: 1:100~1:500

## Images



Western blot analysis of extracts from NIH/3T3 cells, using CA5B antibody #34542.

Immunofluorescence analysis of MCF-7 cells, using CA5B antibody #34542.



## Background

Reversible hydration of carbon dioxide.

Fujikawa-Adachi K., J. Biol. Chem. 274:21228- 21233(1999).

The MGC Project Team; Genome Res. 14:2121-2127(2004).

Note: This product is for in vitro research use only