

## CA6 Antibody

Catalog No: #34543

Package Size: #34543-1 50ul #34543-2 100ul

Orders: order@signalwayantibody.com

Support: tech@signalwayantibody.com

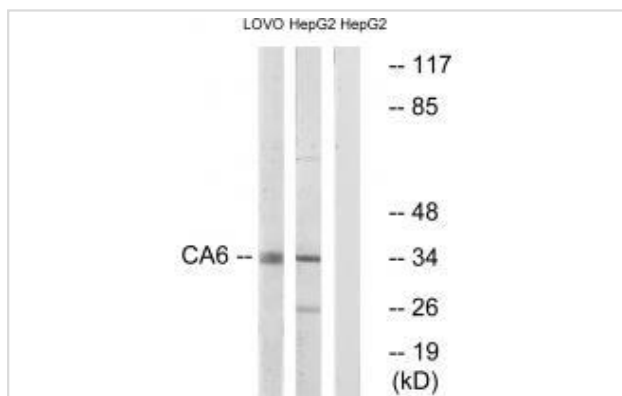
## Description

Product Name	CA6 Antibody
Host Species	Rabbit
Clonality	Polyclonal
Purification	The antibody was affinity-purified from rabbit antiserum by affinity-chromatography using epitope-specific immunogen.
Applications	WB
Species Reactivity	Hu
Specificity	The antibody detects endogenous levels of total CA6 protein.
Immunogen Type	Peptide
Immunogen Description	Synthesized peptide derived from internal of human CA6.
Target Name	CA6
Other Names	Carbonic anhydrase 6; EC=4.2.1.1; Carbonic anhydrase VI; CA-VI; Carbonate dehydratase VI
Accession No.	Swiss-Prot: P23280NCBI Gene ID: 765
Uniprot	P23280
GeneID	765;
SDS-PAGE MW	35kd
Concentration	1.0mg/ml
Formulation	Rabbit IgG in phosphate buffered saline (without Mg <sup>2+</sup> and Ca <sup>2+</sup> ), pH 7.4, 150mM NaCl, 0.02% sodium azide and 50% glycerol.
Storage	Store at -20°C

## Application Details

Western blotting: 1:500~1:3000

## Images



Western blot analysis of extracts from LOVO cells and HepG2 cells, using CA6 antibody #34543.

## Background

---

Reversible hydration of carbon dioxide. Its role in saliva is unknown.

Aldred P., *Biochemistry* 30:569-575(1991).

Grubb D.J., Submitted (FEB-1999) to the EMBL/GenBank/DDBJ databases.

Gregory S.G., *Nature* 441:315-321(2006)

---

Note: This product is for in vitro research use only