

CBR3 Antibody

Catalog No: #34545

Package Size: #34545-1 50ul #34545-2 100ul

Orders: order@signalwayantibody.com

Support: tech@signalwayantibody.com

Description

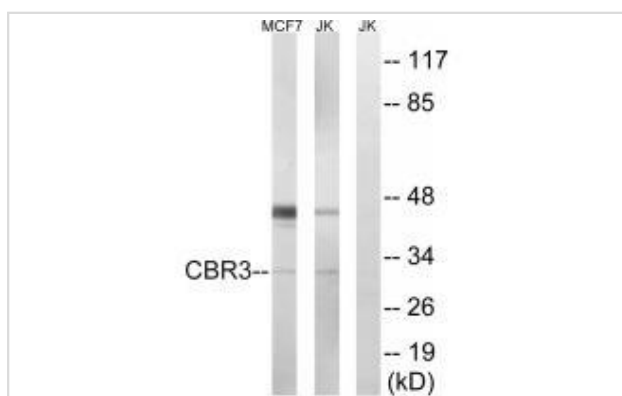
Product Name	CBR3 Antibody
Host Species	Rabbit
Clonality	Polyclonal
Purification	The antibody was affinity-purified from rabbit antiserum by affinity-chromatography using epitope-specific immunogen.
Applications	WB IHC
Species Reactivity	Hu
Specificity	The antibody detects endogenous levels of total CBR3 protein.
Immunogen Type	Peptide
Immunogen Description	Synthesized peptide derived from internal of human CBR3.
Target Name	CBR3
Other Names	carbonyl reductase 3; EC 1.1.1.184; NADPH-dependent carbonyl reductase 3;
Accession No.	Swiss-Prot: O75828NCBI Gene ID: 874
Uniprot	O75828
GeneID	874;
SDS-PAGE MW	31kd
Concentration	1.0mg/ml
Formulation	Rabbit IgG in phosphate buffered saline (without Mg ²⁺ and Ca ²⁺), pH 7.4, 150mM NaCl, 0.02% sodium azide and 50% glycerol.
Storage	Store at -20°C

Application Details

Western blotting: 1:500~1:3000

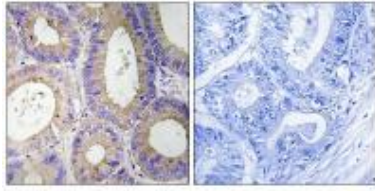
Immunohistochemistry: 1:50~1:100

Images



Western blot analysis of extracts from MCF7 cells and Jurkat cells, using CBR3 antibody #34545.

Immunohistochemistry analysis of paraffin-embedded human colon carcinoma tissue, using CBR3 antibody #34545.



Background

Has low NADPH-dependent oxidoreductase activity towards 4-benzoylpyridine and menadione (in vitro).

Watanabe K., Genomics 52:95-100(1998).

Shimizu N., Submitted (APR-2000) to the EMBL/GenBank/DDBJ databases.

Terada T., Submitted (OCT-2003) to the EMBL/GenBank/DDBJ databases.

Note: This product is for in vitro research use only