

## SPARC Antibody

Catalog No: #21633

Package Size: #21633-1 50ul #21633-2 100ul

Orders: order@signalwayantibody.com

Support: tech@signalwayantibody.com

## Description

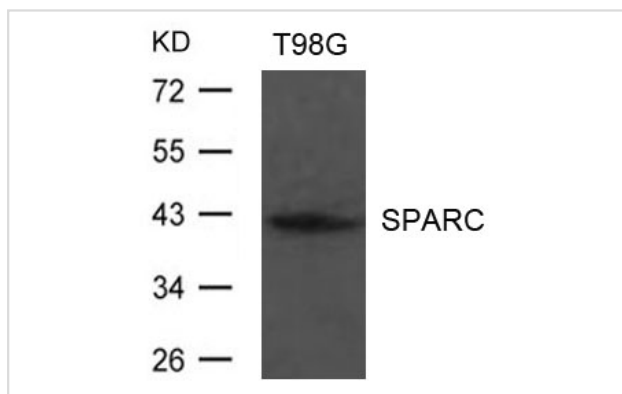
Product Name	SPARC Antibody
Host Species	Rabbit
Clonality	Polyclonal
Purification	Antibodies were produced by immunizing rabbits with synthetic peptide and KLH conjugates. Antibodies were purified by affinity-chromatography using epitope-specific peptide.
Applications	WB
Species Reactivity	Hu
Specificity	The antibody detects endogenous level of total SPARC protein.
Immunogen Type	Peptide-KLH
Immunogen Description	Peptide sequence around aa.52~56 (V-G-E-F-D) derived from Human SPARC.
Target Name	SPARC
Other Names	ON; BM-40;
Accession No.	Swiss-Prot: P09486NCBI Protein: NP_003109.1
Uniprot	P09486
GeneID	6678;
Concentration	1.0mg/ml
Formulation	Supplied at 1.0mg/mL in phosphate buffered saline (without Mg <sup>2+</sup> and Ca <sup>2+</sup> ), pH 7.4, 150mM NaCl, 0.02% sodium azide and 50% glycerol.
Storage	Store at -20°C for long term preservation (recommended). Store at 4°C for short term use.

## Application Details

Predicted MW: 42kd

Western blotting: 1:500~1:1000

## Images



Western blot analysis of extract from T98G cells using SPARC Antibody #21633

## Background

---

Appears to regulate cell growth through interactions with the extracellular matrix and cytokines. Binds calcium and copper, several types of collagen, albumin, thrombospondin, PDGF and cell membranes. There are two calcium binding sites; an acidic domain that binds 5 to 8 Ca<sup>2+</sup> with a low affinity and an EF-hand loop that binds a Ca<sup>2+</sup> ion with a high affinity.

Kelm R.J. Jr., Mann K.G. Blood 75:1105-1113(1990)

Wewer U.M., Albrechtsen R., Fisher L.W. Am. J. Pathol. 132:345-355(1988)

Kuhn C., Mason R.J. Am. J. Pathol. 147:1759-1769(1995)

---

Note: This product is for in vitro research use only