

MEK1/2 Antibody

Catalog No: #21428

Package Size: #21428-1 50ul #21428-2 100ul

Orders: order@signalwayantibody.com

Support: tech@signalwayantibody.com

Description

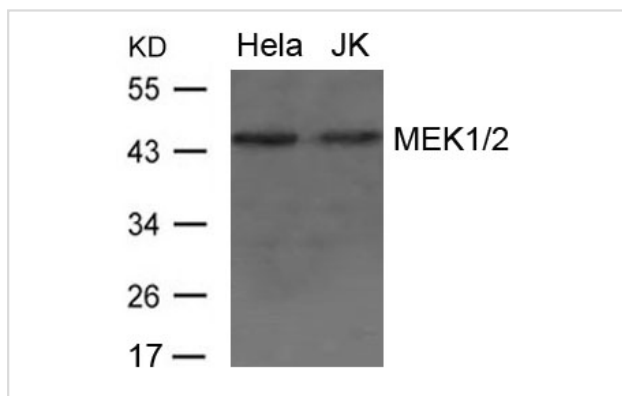
Product Name	MEK1/2 Antibody
Host Species	Rabbit
Clonality	Polyclonal
Purification	Antibodies were produced by immunizing rabbits with synthetic peptide and KLH conjugates. Antibodies were purified by affinity-chromatography using epitope-specific peptide.
Applications	WB
Species Reactivity	Hu Ms Rt
Specificity	The antibody detects endogenous level of total MEK1/2 protein.
Immunogen Type	Peptide-KLH
Immunogen Description	Peptide sequence around aa.235-239(L-Q-G-T-H) derived from Human MEK1/2.
Target Name	MEK1/2
Other Names	MEK1; MKK1; MAPKK1; PRKMK1;
Accession No.	Swiss-Prot: Q02750NCBI Protein: NP_002746.1
Uniprot	Q02750
GeneID	5604;
Concentration	1.0mg/ml
Formulation	Supplied at 1.0mg/mL in phosphate buffered saline (without Mg ²⁺ and Ca ²⁺), pH 7.4, 150mM NaCl, 0.02% sodium azide and 50% glycerol.
Storage	Store at -20°C for long term preservation (recommended). Store at 4°C for short term use.

Application Details

Predicted MW: 45kd

Western blotting: 1:500~1:1000

Images



Western blot analysis of extract from HeLa and JK cells using MEK1/2 Antibody #21428

Background

Catalyzes the concomitant phosphorylation of a threonine and a tyrosine residue in a Thr-Glu-Tyr sequence located in MAP kinases. Activates ERK1 and ERK2 MAP kinases.

Seger R., Seger D., Lozeman F.J., Ahn N.G., Graves L.M., Campbell J.S., Ericsson L., Harrylock M., Jensen A.M., Krebs E.G.J. Biol. Chem. 267:25628-25631(1992)

Mukherjee S., Keitany G., Li Y., Wang Y., Ball H.L., Goldsmith E.J., Orth K. Science 312:1211-1214(2006)

Note: This product is for in vitro research use only