

## LC3 antibody

Catalog No: #21400

Package Size: #21400-1 50ul #21400-2 100ul

Orders: order@signalwayantibody.com

Support: tech@signalwayantibody.com

## Description

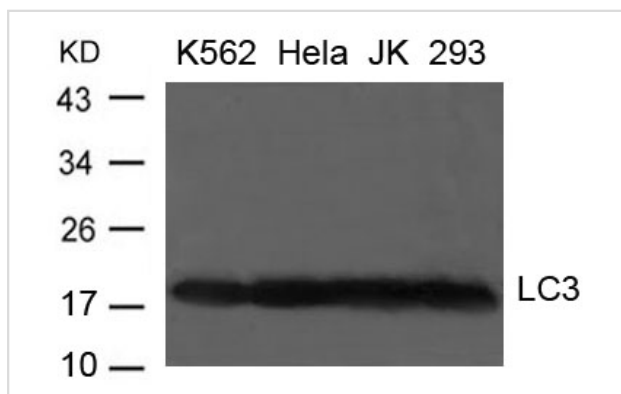
Product Name	LC3 antibody
Host Species	Rabbit
Clonality	Polyclonal
Purification	Antibodies were produced by immunizing rabbits with synthetic peptide and KLH conjugates. Antibodies were purified by affinity-chromatography using epitope-specific peptide.
Applications	WB
Species Reactivity	Hu Ms Rt
Specificity	The antibody detects endogenous level of total LC3 protein.
Immunogen Type	Peptide-KLH
Immunogen Description	Peptide sequence around aa. 112-116 (V-Y-A-S-Q) derived from Human LC3.
Target Name	LC3
Other Names	LC3A; ATG8E; MAP1ALC3; MAP1BLC3;
Accession No.	Swiss-Prot: Q9H492NCBI Protein: NP_115903.1
Uniprot	Q9H492
GeneID	84557;
Concentration	1.0mg/ml
Formulation	Supplied at 1.0mg/mL in phosphate buffered saline (without Mg <sup>2+</sup> and Ca <sup>2+</sup> ), pH 7.4, 150mM NaCl, 0.02% sodium azide and 50% glycerol.
Storage	Store at -20°C for long term preservation (recommended). Store at 4°C for short term use.

## Application Details

Predicted MW: 19kd

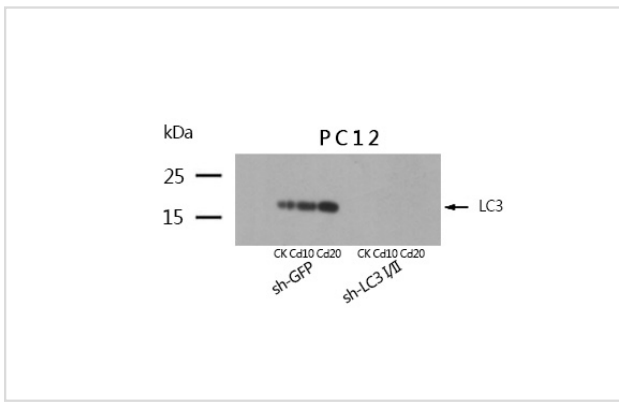
Western blotting: 1:500~1:1000

## Images



Western blot analysis of extract from K-562, HeLa, JK and 293 cells using LC3 Antibody #21400

Western blotting analysis using LC3 antibody #21400.



## Background

Probably involved in formation of autophagosomal vacuoles (autophagosomes).

Note: This product is for in vitro research use only