

FOXP1 Antibody

Catalog No: #21637

Package Size: #21637-1 50ul #21637-2 100ul

Orders: order@signalwayantibody.com

Support: tech@signalwayantibody.com

Description

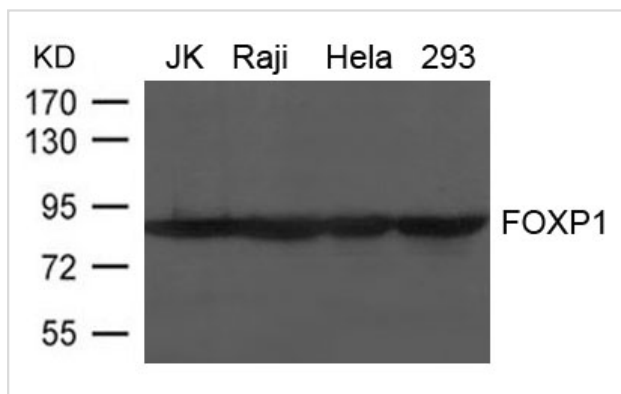
Product Name	FOXP1 Antibody
Host Species	Rabbit
Clonality	Polyclonal
Purification	Antibodies were produced by immunizing rabbits with synthetic peptide and KLH conjugates. Antibodies were purified by affinity-chromatography using epitope-specific peptide.
Applications	WB
Species Reactivity	Hu Ms Rt
Specificity	The antibody detects endogenous level of total FOXP1 protein.
Immunogen Type	Peptide-KLH
Immunogen Description	Peptide sequence around aa. 669~673 (D-E-P-V-N)
Target Name	FOXP1
Other Names	QRF1; 12CC4; hFKH1B; HSPC215;
Accession No.	Swiss-Prot: Q9H334NCBI Protein: NP_116071.2
Uniprot	Q9H334
GeneID	27086;
Concentration	1.0mg/ml
Formulation	Supplied at 1.0mg/mL in phosphate buffered saline (without Mg ²⁺ and Ca ²⁺), pH 7.4, 150mM NaCl, 0.02% sodium azide and 50% glycerol.
Storage	Store at -20°C for long term preservation (recommended). Store at 4°C for short term use.

Application Details

Predicted MW: 82~90kd

Western blotting: 1:500~1:1000

Images



Western blot analysis of extract from JK, Raji, HeLa and 293 cells using FOXP1 Antibody #21637

Background

Transcriptional repressor. It plays an important role in the specification and differentiation of lung epithelium. Can act with CTBP1 to synergistically repress transcription but CTPBP1 is not essential. Essential transcriptional regulator of B cell development
Hamdan F.F., Daoud H., Rochefort D., Piton A. J. Hum. Genet. 87:671-678(2010)

Note: This product is for in vitro research use only