

## MEK5(phospho-Ser311/ Thr315) Antibody

Catalog No: #11559



Package Size: #11559-1 50ul #11559-2 100ul

Orders: [order@signalwayantibody.com](mailto:order@signalwayantibody.com)Support: [tech@signalwayantibody.com](mailto:tech@signalwayantibody.com)

## Description

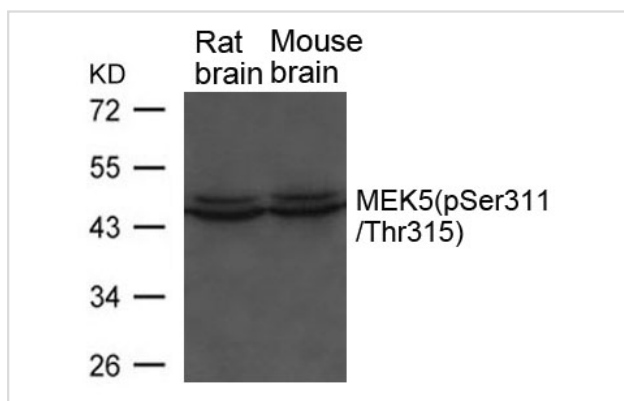
Product Name	MEK5(phospho-Ser311/ Thr315) Antibody
Host Species	Rabbit
Clonality	Polyclonal
Purification	Antibodies were produced by immunizing rabbits with synthetic phosphopeptide and KLH conjugates. Antibodies were purified by affinity-chromatography using epitope-specific phosphopeptide. Non-phospho specific antibodies were removed by chromatography using non-phosphopeptide.
Applications	WB
Species Reactivity	Hu Ms Rt
Specificity	The antibody detects endogenous level of MEK5 only when phosphorylated at serine 311 or threonine 315.
Immunogen Type	Peptide-KLH
Immunogen Description	Peptide sequence around phosphorylation site of Serine 311 and threonine 315 (V-N-S(p)I-A-K-T(p)-Y-V) derived from Rat MEK5.
Target Name	MEK5
Modification	Phospho
Other Names	Map2k5
Accession No.	Swiss-Prot: Q62862NCBI Protein: NP_001029159.1
Uniprot	Q62862
GeneID	29568;
Concentration	1.0mg/ml
Formulation	Supplied at 1.0mg/mL in phosphate buffered saline (without Mg <sup>2+</sup> and Ca <sup>2+</sup> ), pH 7.4, 150mM NaCl, 0.02% sodium azide and 50% glycerol.
Storage	Store at -20°C for long term preservation (recommended). Store at 4°C for short term use.

## Application Details

Predicted MW: 46kd

Western blotting: 1:500~1:1000

## Images



Western blot analysis of extracts from Rat and Mouse brain tissue using MEK5(phospho-Ser311/ Thr315) Antibody #11559.

## Background

Acts as a scaffold for the formation of a ternary MAP3K2/MAP3K3-MAP3K5-MAPK7 signaling complex. Activation of this pathway appear to play a critical role in protecting cells from stress-induced apoptosis, neuronal survival and cardiac development and angiogenesis.

English J.M., Vanderbilt C.A., Xu S., Marcus S., Cobb M.H.J. *Biol. Chem.* 270:28897-28902(1995)

Note: This product is for in vitro research use only