

SLC25A21 Antibody

Catalog No: #34799

Package Size: #34799-1 50ul #34799-2 100ul

Orders: order@signalwayantibody.com

Support: tech@signalwayantibody.com

Description

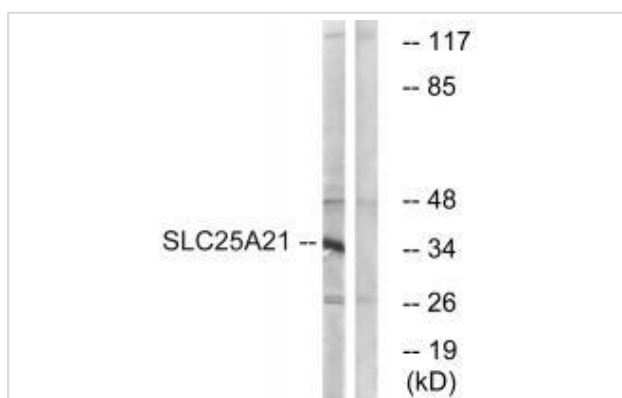
Product Name	SLC25A21 Antibody
Host Species	Rabbit
Clonality	Polyclonal
Purification	The antibody was affinity-purified from rabbit antiserum by affinity-chromatography using epitope-specific immunogen.
Applications	WB IHC
Species Reactivity	Hu Ms Rt
Specificity	The antibody detects endogenous levels of total SLC25A21 protein.
Immunogen Type	Peptide
Immunogen Description	Synthesized peptide derived from internal of human SLC25A21.
Target Name	SLC25A21
Other Names	mgc126570; odc; odc1; oxodicarboxylate carrier; slc25a21
Accession No.	Swiss-Prot: Q9BQT8NCBI Gene ID: 89874
Uniprot	Q9BQT8
GeneID	89874;
SDS-PAGE MW	36kd
Concentration	1.0mg/ml
Formulation	Rabbit IgG in phosphate buffered saline (without Mg ²⁺ and Ca ²⁺), pH 7.4, 150mM NaCl, 0.02% sodium azide and 50% glycerol.
Storage	Store at -20°C

Application Details

Western blotting: 1:500~1:3000

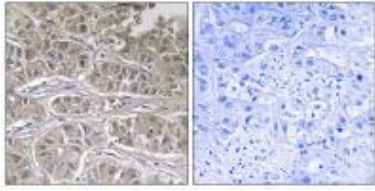
Immunohistochemistry: 1:50~1:100

Images



Western blot analysis of extracts from HepG2 cells, using SLC25A21 antibody #34799.

Immunohistochemistry analysis of paraffin-embedded human liver carcinoma tissue using SLC25A21 antibody #34799.



Background

Transports C5-C7 oxodicarboxylates across the inner membranes of mitochondria. Can transport 2-oxoadipate, 2-oxoglutarate, adipate, glutarate, and to a lesser extent, pimelate, 2-oxopimelate, 2-aminoadipate, oxaloacetate, and citrate.

Ota T., Nat. Genet. 36:40-45(2004).

Mungall A.J., Nature 425:805-811(2003).

The MGC Project Team; Genome Res. 14:2121-2127(2004).

Note: This product is for in vitro research use only