

WISP2 Antibody

Catalog No: #21668

Package Size: #21668-1 50ul #21668-2 100ul

Orders: order@signalwayantibody.com

Support: tech@signalwayantibody.com

Description

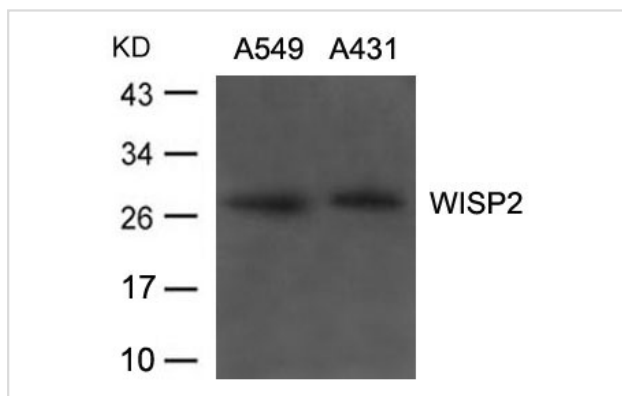
Product Name	WISP2 Antibody
Host Species	Rabbit
Clonality	Polyclonal
Purification	Antibodies were produced by immunizing rabbits with synthetic peptide and KLH conjugates. Antibodies were purified by affinity-chromatography using epitope-specific peptide.
Applications	WB
Species Reactivity	Hu
Specificity	The antibody detects endogenous level of total WISP2 protein.
Immunogen Type	Peptide-KLH
Immunogen Description	Peptide sequence around aa.242~246(G-R-S-P-Q) derived from Human WISP2.
Target Name	WISP2
Other Names	CCN5; CT58; CTGF-L
Accession No.	Swiss-Prot: O76076NCBI Protein: NP_003872.1
Uniprot	O76076
GeneID	8839;
Concentration	1.0mg/ml
Formulation	Supplied at 1.0mg/mL in phosphate buffered saline (without Mg ²⁺ and Ca ²⁺), pH 7.4, 150mM NaCl, 0.02% sodium azide and 50% glycerol.
Storage	Store at -20°C for long term preservation (recommended). Store at 4°C for short term use.

Application Details

Predicted MW: 27kd

Western blotting: 1:500~1:1000

Images



Western blot analysis of extracts from A549, A431 cells using WISP2 Antibody #21668.

Background

May play an important role in modulating bone turnover. Promotes the adhesion of osteoblast cells and inhibits the binding of fibrinogen to integrin receptors. In addition, inhibits osteocalcin production.

Pennica D., Swanson T.A., Welsh J.W. J.Proc. Natl. Acad. Sci. U.S.A. 95:14717-14722(1998)

Note: This product is for in vitro research use only