

## CHML Antibody

Catalog No: #34948

Package Size: #34948-1 50ul #34948-2 100ul

Orders: order@signalwayantibody.com

Support: tech@signalwayantibody.com

## Description

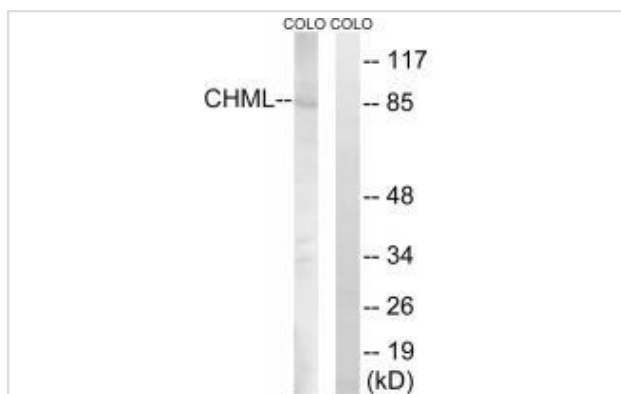
Product Name	CHML Antibody
Host Species	Rabbit
Clonality	Polyclonal
Purification	The antibody was affinity-purified from rabbit antiserum by affinity-chromatography using epitope-specific immunogen.
Applications	WB IHC
Species Reactivity	Hu
Specificity	The antibody detects endogenous levels of total CHML protein.
Immunogen Type	Peptide
Immunogen Description	Synthesized peptide derived from internal of human CHML.
Target Name	CHML
Other Names	Rab proteins geranylgeranyltransferase component A 2; Rab escort protein 2; REP-2; Choroideraemia-like protein;
Accession No.	Swiss-Prot: P26374NCBI Gene ID: 1122
Uniprot	P26374
GeneID	1122;
SDS-PAGE MW	85kd
Concentration	1.0mg/ml
Formulation	Rabbit IgG in phosphate buffered saline (without Mg <sup>2+</sup> and Ca <sup>2+</sup> ), pH 7.4, 150mM NaCl, 0.02% sodium azide and 50% glycerol.
Storage	Store at -20°C

## Application Details

Western blotting: 1:500~1:3000

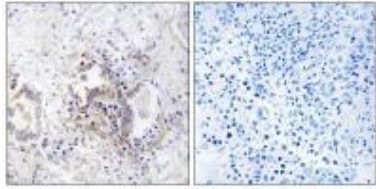
Immunohistochemistry: 1:50~1:100

## Images



Western blot analysis of extracts from COLO cells, using CHML antibody #34948.

Immunohistochemistry analysis of paraffin-embedded human lung carcinoma tissue, using CHML antibody #34948.



## Background

Substrate-binding subunit (component A) of the Rab geranylgeranyltransferase (GGTase) complex. Binds unprenylated Rab proteins and presents the substrate peptide to the catalytic component B. The component A is thought to be regenerated by transferring its prenylated Rab back to the donor membrane. Less effective than CHM in supporting prenylation of Rab3 family.

Cremers F.P.M., Hum. Mol. Genet. 1:71-75(1992).

Kasper G., Gene 295:27-32(2002).

Ota T. Nat. Genet. 36:40-45(2004)

Note: This product is for in vitro research use only