

## RAB18 Antibody

Catalog No: #34966

Package Size: #34966-1 50ul #34966-2 100ul

Orders: order@signalwayantibody.com

Support: tech@signalwayantibody.com

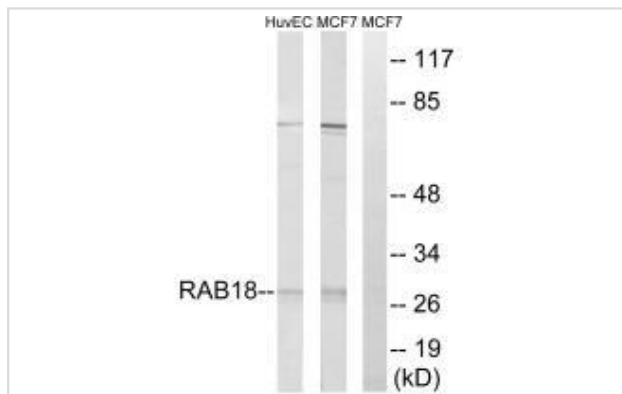
## Description

Product Name	RAB18 Antibody
Host Species	Rabbit
Clonality	Polyclonal
Purification	The antibody was affinity-purified from rabbit antiserum by affinity-chromatography using epitope-specific immunogen.
Applications	WB
Species Reactivity	Hu
Specificity	The antibody detects endogenous levels of total RAB18 protein.
Immunogen Type	Peptide
Immunogen Description	Synthesized peptide derived from internal of human RAB18.
Target Name	RAB18
Other Names	Ras-related protein Rab-18; RB18;
Accession No.	Swiss-Prot: Q9NP72NCBI Gene ID: 22931
Uniprot	Q9NP72
GeneID	22931;
SDS-PAGE MW	28kd
Concentration	1.0mg/ml
Formulation	Rabbit IgG in phosphate buffered saline (without Mg <sup>2+</sup> and Ca <sup>2+</sup> ), pH 7.4, 150mM NaCl, 0.02% sodium azide and 50% glycerol.
Storage	Store at -20°C

## Application Details

Western blotting: 1:500~1:3000

## Images



Western blot analysis of extracts from HuvEc cells and MCF-7 cells, using RAB18 antibody #34966.

## Background

---

Plays a role in apical endocytosis/recycling. May be implicated in transport between the plasma membrane and early endosomes. Plays a key role in eye and brain development and neurodegeneration.

Chikri M.M., Submitted (APR-2000) to the EMBL/GenBank/DDBJ databases.

Schaefer U., FEBS Lett. 466:148-154(2000).

Cui W.C., Submitted (JUL-2003) to the EMBL/GenBank/DDBJ databases.

---

Note: This product is for in vitro research use only