

## RAB6C Antibody

Catalog No: #34973

Package Size: #34973-1 50ul #34973-2 100ul

Orders: order@signalwayantibody.com

Support: tech@signalwayantibody.com

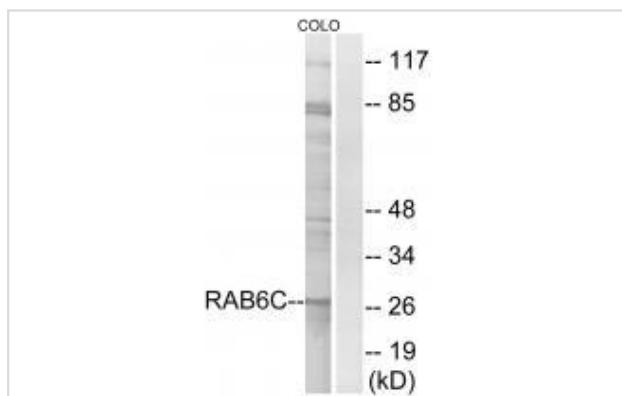
## Description

|                       |  |
|-----------------------|--|
| Product Name          | RAB6C Antibody   |
| Host Species          | Rabbit   |
| Clonality             | Polyclonal   |
| Purification          | The antibody was affinity-purified from rabbit antiserum by affinity-chromatography using epitope-specific immunogen.                              |
| Applications          | WB   |
| Species Reactivity    | Hu Ms Rt   |
| Specificity           | The antibody detects endogenous levels of total RAB6C protein.   |
| Immunogen Type        | Peptide  |
| Immunogen Description | Synthesized peptide derived from internal of human RAB6C.  |
| Target Name           | RAB6C  |
| Other Names           | gtp-binding protein rab6c; rab gtpase rab6a; rab6; rab6a; member ras oncogene family   |
| Accession No.         | Swiss-Prot: Q9H0N0NCBI Gene ID: 84084  |
| Uniprot               | Q9H0N0   |
| GeneID                | 84084;   |
| SDS-PAGE MW           | 28kd   |
| Concentration         | 1.0mg/ml   |
| Formulation           | Rabbit IgG in phosphate buffered saline (without Mg <sup>2+</sup> and Ca <sup>2+</sup> ), pH 7.4, 150mM NaCl, 0.02% sodium azide and 50% glycerol. |
| Storage               | Store at -20°C   |

## Application Details

Western blotting: 1:500~1:3000

## Images



Western blot analysis of extracts from COLO cells, using RAB6C antibody #34973.

## Background

---

May be involved in the regulation of centrosome duplication and cell cycle progression.

Shan J., *Biochim. Biophys. Acta* 1589:112-123(2002).

Wiemann S., *Genome Res.* 11:422-435(2001).

Hillier L.W., *Nature* 434:724-731(2005).

---

Note: This product is for in vitro research use only