

CRABP2 Antibody

Catalog No: #21647

Package Size: #21647-1 50ul #21647-2 100ul

Orders: order@signalwayantibody.com

Support: tech@signalwayantibody.com

Description

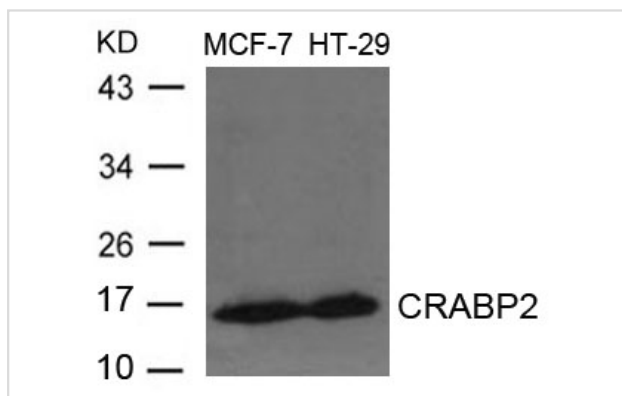
Product Name	CRABP2 Antibody
Host Species	Rabbit
Clonality	Polyclonal
Purification	Antibodies were produced by immunizing rabbits with synthetic peptide and KLH conjugates. Antibodies were purified by affinity-chromatography using epitope-specific peptide.
Applications	WB
Species Reactivity	Hu Rt
Specificity	The antibody detects endogenous levels of total CRABP2 protein.
Immunogen Type	Peptide-KLH
Immunogen Description	Peptide sequence around aa.87~91(K-W-E-S-E) derived from Human CRABP2
Target Name	CRABP2
Other Names	RBP6; CRABP-II;
Accession No.	Swiss-Prot: P29373NCBI Protein: NP_001186652.1
Uniprot	P29373
GeneID	1382;
Concentration	1.0mg/ml
Formulation	Supplied at 1.0mg/mL in phosphate buffered saline (without Mg ²⁺ and Ca ²⁺), pH 7.4, 150mM NaCl, 0.02% sodium azide and 50% glycerol.
Storage	Store at -20°C for long term preservation (recommended). Store at 4°C for short term use.

Application Details

Predicted MW: 16kd

Western blotting: 1:500~1:1000

Images



Western blot analysis of extracts from MCF-7 and HT-29 cells using CRABP2 Antibody #21647.

Background

Transports retinoic acid to the nucleus. Regulates the access of retinoic acid to the nuclear retinoic acid receptors "Direct channeling of retinoic acid between cellular retinoic acid-binding protein II and retinoic acid receptor sensitizes mammary carcinoma cells to retinoic acid-induced growth arrest."

Budhu A.S., Noy N. Mol. Cell. Biol. 22:2632-2641(2002) "A ligand-activated nuclear localization signal in cellular retinoic acid binding protein-II."

Sessler R.J., Noy N. Mol. Cell 18:343-353(2005)

Note: This product is for in vitro research use only