

RGS5 Antibody

Catalog No: #34983

Package Size: #34983-1 50ul #34983-2 100ul

Orders: order@signalwayantibody.com

Support: tech@signalwayantibody.com

Description

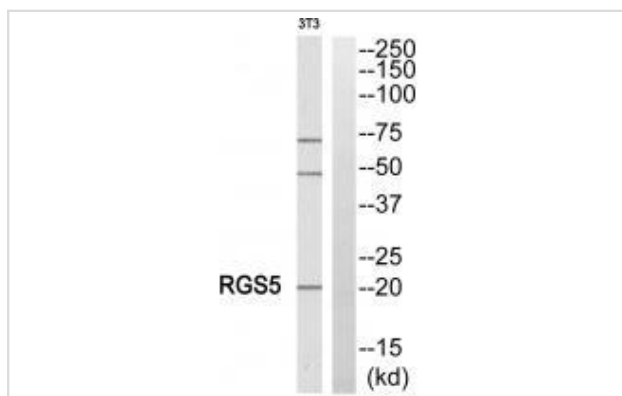
Product Name	RGS5 Antibody
Host Species	Rabbit
Clonality	Polyclonal
Purification	The antibody was affinity-purified from rabbit antiserum by affinity-chromatography using epitope-specific immunogen.
Applications	WB,IHC,IF,ELISAB
Species Reactivity	Human,Mouse,Rat
Specificity	The antibody detects endogenous levels of total RGS5 protein.
Immunogen Type	Peptide
Immunogen Description	Synthesized peptide derived from internal of human RGS5.
Target Name	RGS5
Other Names	MST092; MST106; MST129; MSTP032; MSTP092
Accession No.	Swiss-Prot: O15539NCBI Gene ID: 8490
Uniprot	O15539
GeneID	8490;
SDS-PAGE MW	21kd
Concentration	1.0mg/ml
Formulation	Rabbit IgG in phosphate buffered saline (without Mg ²⁺ and Ca ²⁺), pH 7.4, 150mM NaCl, 0.02% sodium azide and 50% glycerol.
Storage	Store at -20°C

Application Details

Western blotting: 1:500~1:3000

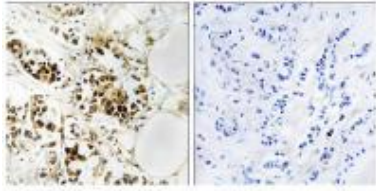
Immunohistochemistry: 1:50~1:100

Images



Western blot analysis of extracts from NIH/3T3 cells, using RGS5 antibody #34983.

Immunohistochemistry analysis of paraffin-embedded human breast carcinoma tissue, using RGS5 antibody #34983.



Background

Inhibits signal transduction by increasing the GTPase activity of G protein alpha subunits thereby driving them into their inactive GDP-bound form.

Binds to G(i)-alpha and G(o)-alpha, but not to G(s)-alpha By similarity.

Chatterjee T.K., Submitted (OCT-1997) to the EMBL/GenBank/DDBJ databases.

Seki N., J. Hum. Genet. 43:202-205(1998).

Cismowski M.J., Nat. Biotechnol. 17:878-883(1999).

Note: This product is for in vitro research use only