

E2F-2 Antibody

Catalog No: #21657

Package Size: #21657-1 50ul #21657-2 100ul

Orders: order@signalwayantibody.com

Support: tech@signalwayantibody.com

Description

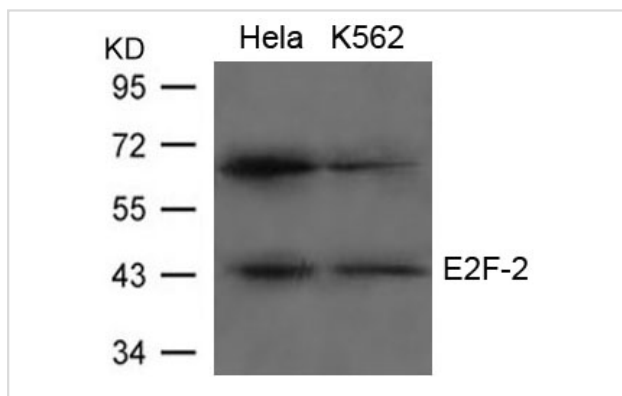
Product Name	E2F-2 Antibody
Host Species	Rabbit
Clonality	Polyclonal
Purification	Antibodies were produced by immunizing rabbits with synthetic peptide and KLH conjugates. Antibodies were purified by affinity-chromatography using epitope-specific peptide.
Applications	WB
Species Reactivity	Hu Ms
Specificity	The antibody detects endogenous level of total E2F-2 protein.
Immunogen Type	Peptide-KLH
Immunogen Description	Peptide sequence around aa.425~429(L-F-D-S-Y) derived from Human E2F-2.
Target Name	E2F-2
Other Names	E2F-2
Accession No.	Swiss-Prot: Q14209NCBI Protein: NP_004082.1
Uniprot	Q14209
GeneID	1870;
Concentration	1.0mg/ml
Formulation	Supplied at 1.0mg/mL in phosphate buffered saline (without Mg ²⁺ and Ca ²⁺), pH 7.4, 150mM NaCl, 0.02% sodium azide and 50% glycerol.
Storage	Store at -20°C for long term preservation (recommended). Store at 4°C for short term use.

Application Details

Predicted MW: 45kd

Western blotting: 1:500~1:1000

Images



Western blot analysis of extracts from HeLa and K562 cells using E2F-2 Antibody #21657.

Background

Transcription activator that binds DNA cooperatively with DP proteins through the E2 recognition site, 5'-TTTC[CG]CGC-3' found in the promoter region of a number of genes whose products are involved in cell cycle regulation or in DNA replication. The DRTF1/E2F complex functions in the control of cell-cycle progression from G1 to S phase. E2F-2 binds specifically to RB1 protein, in a cell-cycle dependent manner.

Rubin S.M., Gall A.-L., Zheng N., Pavletich N.P. Cell 123:1093-1106(2005)

Note: This product is for in vitro research use only