

IGFBP-3 Antibody

Catalog No: #21671

Package Size: #21671-1 50ul #21671-2 100ul

Orders: order@signalwayantibody.com

Support: tech@signalwayantibody.com

Description

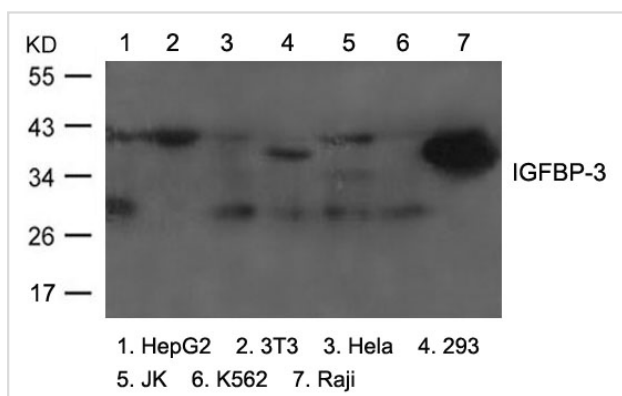
| | |
|-----------------------|---|
| Product Name | IGFBP-3 Antibody |
| Host Species | Rabbit |
| Clonality | Polyclonal |
| Purification | Antibodies were produced by immunizing rabbits with synthetic peptide and KLH conjugates. Antibodies were purified by affinity-chromatography using epitope-specific peptide. |
| Applications | WB |
| Species Reactivity | Hu |
| Specificity | The antibody detects endogenous level of total IGFBP-3 protein. |
| Immunogen Type | Peptide-KLH |
| Immunogen Description | Peptide sequence around aa.185~189(R-Y-K-V-D) derived from Human IGFBP-3. |
| Target Name | IGFBP-3 |
| Other Names | IBP3; BP-53; |
| Accession No. | Swiss-Prot: P17936NCBI Protein: NP_001013416.1 |
| Uniprot | P17936 |
| GeneID | 3486; |
| Concentration | 1.0mg/ml |
| Formulation | Supplied at 1.0mg/mL in phosphate buffered saline (without Mg ²⁺ and Ca ²⁺), pH 7.4, 150mM NaCl, 0.02% sodium azide and 50% glycerol. |
| Storage | Store at -20°C for long term preservation (recommended). Store at 4°C for short term use. |

Application Details

Predicted MW: 24-41kd

Western blotting: 1:500~1:1000

Images



Western blot analysis of extracts from various cells using IGFBP-3 Antibody #21671.

Background

IGF-binding proteins prolong the half-life of the IGFs and have been shown to either inhibit or stimulate the growth promoting effects of the IGFs on cell culture. They alter the interaction of IGFs with their cell surface receptors.

Roghani M., Segovia B., Whitechurch O., Binoux M. *Growth Regul.* 1:125-130(1991)

Ikonen M., Liu B., Hashimoto Y., Ma L. Cohen P. *Proc. Natl. Acad. Sci. U.S.A.* 100:13042-13047(2003)

Zhou W., Ross M.M., Tessitore A. J. *Proteome Res.* 8:5523-5531(2009)

Note: This product is for in vitro research use only