

Beclin-1 Antibody

Catalog No: #21582

Package Size: #21582-1 50ul #21582-2 100ul

Orders: order@signalwayantibody.com

Support: tech@signalwayantibody.com

Description

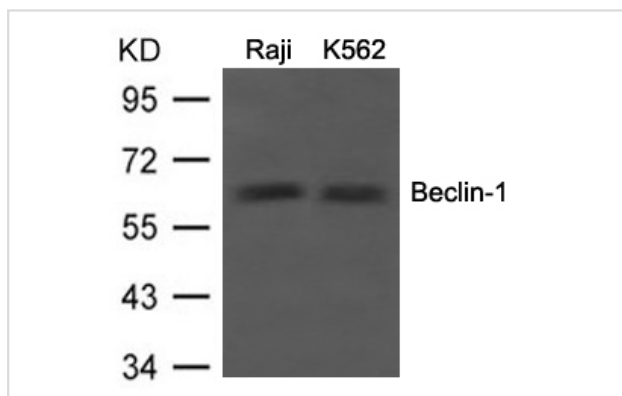
Product Name	Beclin-1 Antibody
Host Species	Rabbit
Clonality	Polyclonal
Purification	Antibodies were produced by immunizing rabbits with synthetic peptide and KLH conjugates. Antibodies were purified by affinity-chromatography using epitope-specific peptide.
Applications	WB
Species Reactivity	Hu
Specificity	The antibody detects endogenous level of total Beclin-1 protein.
Immunogen Type	Peptide-KLH
Immunogen Description	Peptide sequence around aa.69-73(F-I-E-T-P) derived from Human Beclin-1.
Target Name	Beclin-1
Other Names	ATG6; VPS30;
Accession No.	Swiss-Prot: Q14457NCBI Protein: NP_003757.1
Uniprot	Q14457
GeneID	8678;
Concentration	1.0mg/ml
Formulation	Supplied at 1.0mg/mL in phosphate buffered saline (without Mg ²⁺ and Ca ²⁺), pH 7.4, 150mM NaCl, 0.02% sodium azide and 50% glycerol.
Storage	Store at -20°C for long term preservation (recommended). Store at 4°C for short term use.

Application Details

Predicted MW: 60kd

Western blotting: 1:500~1:1000

Images



Western blot analysis of extracts from Raji and K562 cells using Beclin-1 Antibody #21582.

Background

Plays a central role in autophagy. Required for the abscission step in cytokinesis. May play a role in antiviral host defense. Protects against infection by a neurovirulent strain of Sindbis virus.

Sagona A.P., Nezis I.P., Pedersen N.M., Liestol K., Poulton J., Rusten T.E., Skotheim R.I., Raiborg C., Stenmark H. *Nat. Cell Biol.* 12:362-371(2010)
Sun Q., Fan W., Chen K., Ding X., Chen S., Zhong Q. *Proc. Natl. Acad. Sci. U.S.A.* 105:19211-19216(2008)

Note: This product is for in vitro research use only