

Niban(Phospho-Ser602) Antibody

Catalog No: #11578

Package Size: #11578-1 50ul #11578-2 100ul

Orders: order@signalwayantibody.com

Support: tech@signalwayantibody.com

Description

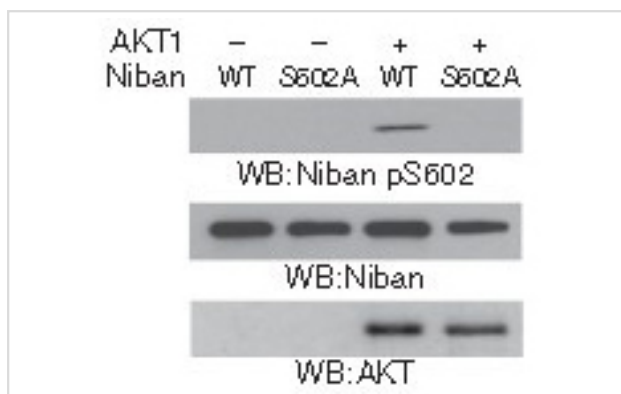
Product Name	Niban(Phospho-Ser602) Antibody
Host Species	Rabbit
Clonality	Polyclonal
Purification	Antibodies were produced by immunizing rabbits with synthetic phosphopeptide and KLH conjugates. Antibodies were purified by affinity-chromatography using epitope-specific phosphopeptide. Non-phospho specific antibodies were removed by chromatography using non-phosphopeptide.
Applications	WB
Species Reactivity	Hu
Specificity	The antibody detects endogenous level of Niban only when phosphorylated at serine 602.
Immunogen Type	Peptide-KLH
Immunogen Description	Peptide sequence around phosphorylation site of serine 602 (R-A-S(p)-A-I) derived from Human Niban.
Target Name	Niban
Modification	Phospho
Other Names	FAM129A
Accession No.	Swiss-Prot: Q9BZQ8NCBI Protein: NP_443198.1
Uniprot	Q9BZQ8
GeneID	116496;
Concentration	1.0mg/ml
Formulation	Supplied at 1.0mg/mL in phosphate buffered saline (without Mg ²⁺ and Ca ²⁺), pH 7.4, 150mM NaCl, 0.02% sodium azide and 50% glycerol.
Storage	Store at -20°C for long term preservation (recommended). Store at 4°C for short term use.

Application Details

Predicted MW: 150kd

Western blotting: 1:500~1:1000

Images



Western blot analysis in vitro kinase assays were performed by mixing purified bacterially expressed WT His β Niban or the His β Niban S602A with or without purified active AKT1 using Niban (Phospho-Ser602) Antibody #11578.

Background

Regulates phosphorylation of a number of proteins involved in translation regulation including EIF2A, EIF4EBP1 and RPS6KB1. May be involved in the endoplasmic reticulum stress response

Vill

Note: This product is for in vitro research use only