

APOE Antibody

Catalog No: #35301

Package Size: #35301-1 50ul #35301-2 100ul

Orders: order@signalwayantibody.com

Support: tech@signalwayantibody.com

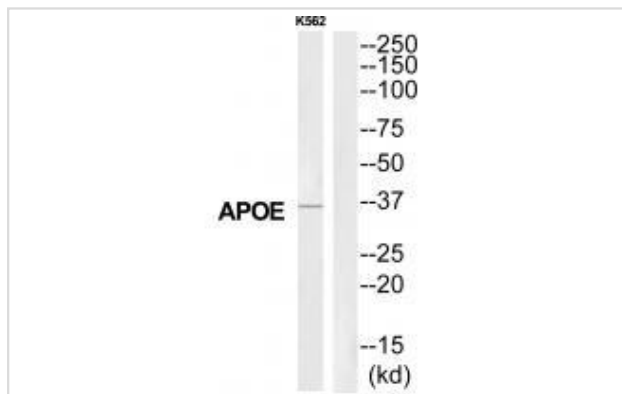
Description

Product Name	APOE Antibody
Host Species	Rabbit
Clonality	Polyclonal
Purification	The antibody was affinity-purified from rabbit antiserum by affinity-chromatography using epitope-specific immunogen.
Applications	WB
Species Reactivity	Hu
Specificity	The antibody detects endogenous levels of total APOE protein.
Immunogen Type	Peptide
Immunogen Description	Synthesized peptide derived from C-terminal of human APOE.
Target Name	APOE
Other Names	AD2; Apo-E; APOE; Apolipoprotein E; apolipoprotein E3
Accession No.	Swiss-Prot: P02649NCBI Gene ID: 348
Uniprot	P02649
GeneID	348;
SDS-PAGE MW	36kd
Concentration	1.0mg/ml
Formulation	Rabbit IgG in phosphate buffered saline (without Mg ²⁺ and Ca ²⁺), pH 7.4, 150mM NaCl, 0.02% sodium azide and 50% glycerol.
Storage	Store at -20°C

Application Details

Western blotting: 1:500~1:3000

Images



Western blot analysis of extracts from K562 cells, using APOE antibody #35301.

Background

Mediates the binding, internalization, and catabolism of lipoprotein particles. It can serve as a ligand for the LDL (apo B/E) receptor and for the specific apo-E receptor (chylomicron remnant) of hepatic tissues.

Zannis V.I., J. Biol. Chem. 259:5495-5499(1984).

McLean J.W., J. Biol. Chem. 259:6498-6504(1984).

Paik Y.-K., Proc. Natl. Acad. Sci. U.S.A. 82:3445-3449(1985).

Note: This product is for in vitro research use only