

MSH2 Antibody

Catalog No: #35358

Orders: order@signalwayantibody.com

Support: tech@signalwayantibody.com

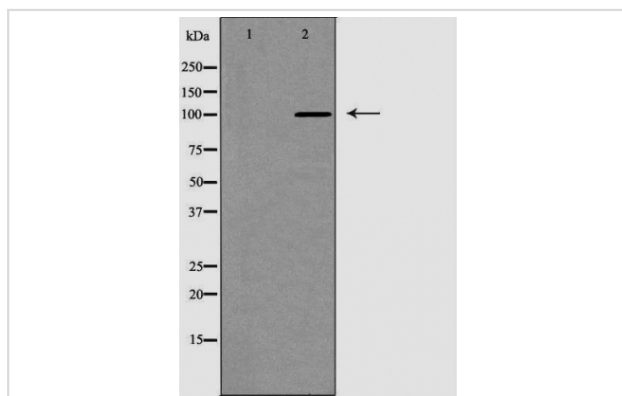
Description

Product Name	MSH2 Antibody
Host Species	Rabbit
Clonality	Polyclonal
Purification	Antibodies were purified by antigen-affinity chromatography.
Applications	WB
Species Reactivity	Hu Ms Rt
Specificity	The antibody detects endogenous levels of total MSH2 protein.
Immunogen Type	Recombinant Protein
Immunogen Description	A synthesized peptide of human Angiopoietin 2
Target Name	MSH2
Other Names	COCA1 antibody; FCC1 antibody; HNPCC antibody; HNPCC1 antibody; LCFS2 antibody; MSH2 antibody; DNA mismatch repair protein Msh2 antibody; mutS protein homolog 2 antibody; hMSH2 antibody; "mutS homolog 2; colon cancer; nonpolyposis type 1 (E. coli) antibod
Accession No.	Swiss-Prot#:P43246;NCBI Gene#:4436
Uniprot	P43246
GeneID	4436;
SDS-PAGE MW	105kd
Concentration	1mg/ml
Formulation	Rabbit IgG in phosphate buffered saline , pH 7.4, 150mM NaCl, 0.02% sodium azide and 50% glycerol.
Storage	Store at -20°C

Application Details

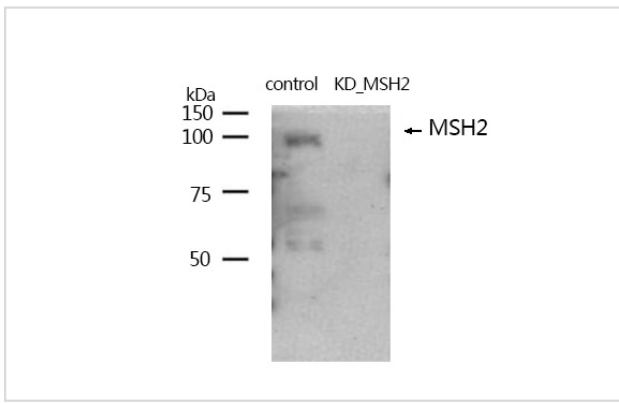
Western blotting: 1:500-1:2000

Images



Western blot analysis of extracts of various celllines, using MSH2 antibody. The lane on the left is treated with the antigen-specific peptide.

Western blotting analysis using MSH2 Antibody #35358.



Background

MSH2 was identified as a locus frequently mutated in hereditary nonpolyposis colon cancer (HNPCC). When cloned, it was discovered to be a human homolog of the *E. coli* mismatch repair gene *mutS*, consistent with the characteristic alterations in microsatellite sequences (RER+ phenotype) found in HNPCC. [provided by RefSeq]

Note: This product is for in vitro research use only