

MMP10 Antibody

Catalog No: #35407

Orders: order@signalwayantibody.comSupport: tech@signalwayantibody.com

Description

Product Name	MMP10 Antibody
Host Species	Rabbit
Clonality	Polyclonal
Purification	Antibodies were purified by antigen-affinity chromatography.
Applications	WB,IHC,IF
Species Reactivity	Human,Mouse,Rat
Specificity	The antibody detects endogenous levels of total MMP10 protein.
Immunogen Type	Recombinant Protein
Immunogen Description	Recombinant fragment contain a sequence corresponding to a region within amino acids 208 and 444 of MMP10.
Target Name	MMP10
Other Names	SL-2 antibody; STMY2 antibody; MMP10 antibody; matrix metalloproteinase-10 antibody; matrix metalloproteinase 10 (stromelysin 2) antibody; matrix metalloproteinase 10 antibody; stromelysin 2 antibody; transin 2 antibody; MMP-10 antibody; transin-2 antibody;
Accession No.	Swiss-Prot#:P09238;NCBI Gene#:4319
Uniprot	P09238
GeneID	4319;
SDS-PAGE MW	54kd
Concentration	0.48mg/ml
Formulation	Rabbit IgG in 1XPBS, 1%BSA, 20% Glycerol (pH7). 0.01% Thimerosal was added as a preservative.
Storage	Store at -20°C

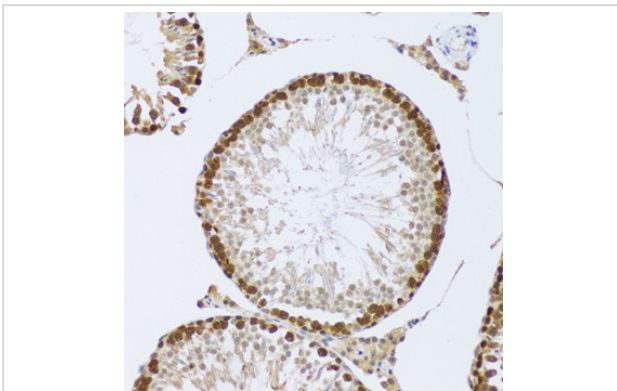
Application Details

WB □ 1:500 - 1:2000

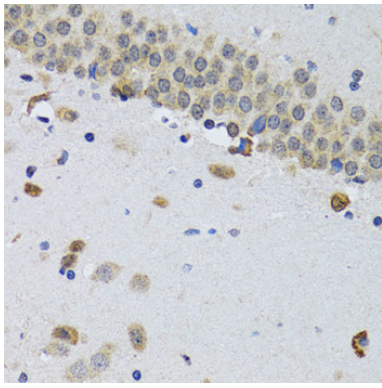
IHC □ 1:50 - 1:100

IF □ 1:10 - 1:100

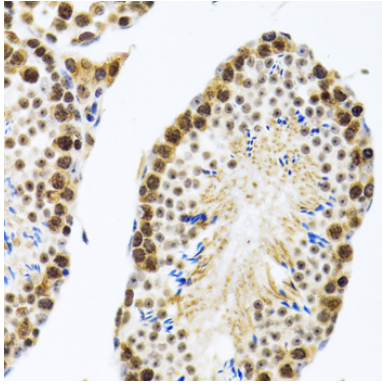
Images



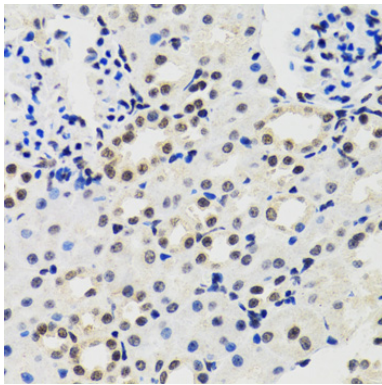
Immunohistochemistry of paraffin-embedded mouse testis using CIRBP at dilution of 1:100 (20x lens).



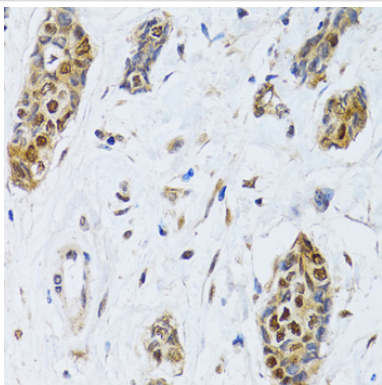
Immunohistochemistry of paraffin-embedded mouse brain using CIRBP at dilution of 1:100 (40x lens).



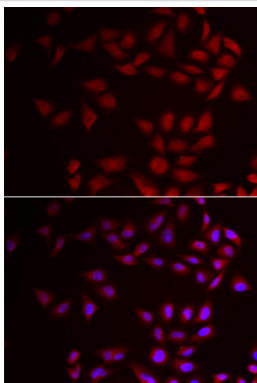
Immunohistochemistry of paraffin-embedded rat testis using CIRBP at dilution of 1:100 (40x lens).



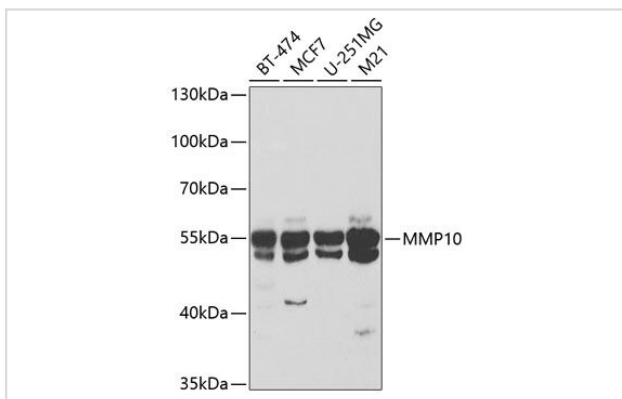
Immunohistochemistry of paraffin-embedded mouse kidney using CIRBP at dilution of 1:100 (40x lens).



Immunohistochemistry of paraffin-embedded human breast cancer using CIRBP at dilution of 1:100 (40x lens).



Immunofluorescence analysis of HeLa cells using CIRBP .
Blue: DAPI for nuclear staining.



Western blot analysis of extracts of various cell lines, using MMP10 at 1:400 dilution.

Background

Proteins of the matrix metalloproteinase (MMP) family are involved in the breakdown of extracellular matrix in normal physiological processes, such as embryonic development, reproduction, and tissue remodeling, as well as in disease processes, such as arthritis and metastasis. Most MMP's are secreted as inactive proproteins which are activated when cleaved by extracellular proteinases. The enzyme encoded by this gene degrades proteoglycans and fibronectin. The gene is part of a cluster of MMP genes which localize to chromosome 11q22.3. [provided by RefSeq]

Note: This product is for in vitro research use only