

LRG1 Antibody

Catalog No: #35439



Orders: order@signalwayantibody.com
Support: tech@signalwayantibody.com

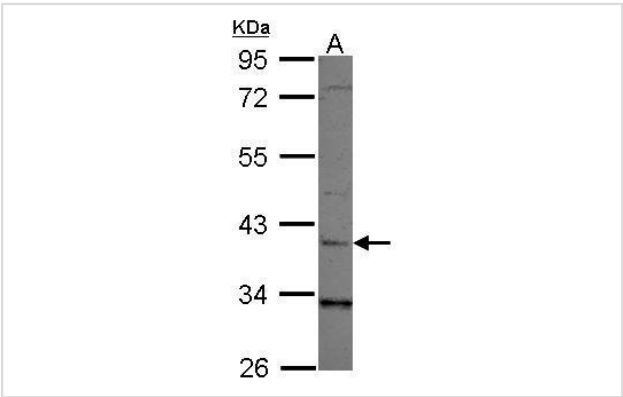
Description

Product Name	LRG1 Antibody
Host Species	Rabbit
Clonality	Polyclonal
Purification	Antibodies were purified by antigen-affinity chromatography.
Applications	WB
Species Reactivity	Hu
Specificity	The antibody detects endogenous levels of total LRG1 protein.
Immunogen Type	Recombinant Protein
Immunogen Description	Recombinant fragment corresponding to a region within amino acids 1 and 301 of LRG1.
Target Name	LRG1
Other Names	FLJ45787 antibody; HMFT1766 antibody; LRG antibody; LRG1 antibody; 1300008B03Rik antibody; leucine rich alpha 2 glycoprotein antibody; 2310031E04Rik antibody; leucine-rich alpha-2-glycoprotein antibody; leucine-rich alpha-2-glycoprotein 1 antibody
Accession No.	Swiss-Prot#:P02750;NCBI Gene#:116844
Uniprot	P02750
GeneID	116844;
SDS-PAGE MW	38kd
Concentration	1mg/ml
Formulation	Rabbit IgG in 1XPBS, 1%BSA, 20% Glycerol (pH7). 0.01% Thimerosal was added as a preservative.
Storage	Store at -20°C

Application Details

Western blotting: 1:500-1:3000

Images



Sample (30 ug of whole cell lysate)
A: 293T
10% SDS PAGE
#35439 diluted at 1:1000

Background

The leucine-rich repeat (LRR) family of proteins, including LRG1, have been shown to be involved in protein-protein interaction, signal transduction, and cell adhesion and development. LRG1 is expressed during granulocyte differentiation (O'Donnell et al., 2002 [PubMed 12223515]).[supplied by OMIM]

Note: This product is for in vitro research use only