

# 6-His Antibody

Catalog No: #35533

Orders: [order@signalwayantibody.com](mailto:order@signalwayantibody.com)Support: [tech@signalwayantibody.com](mailto:tech@signalwayantibody.com)

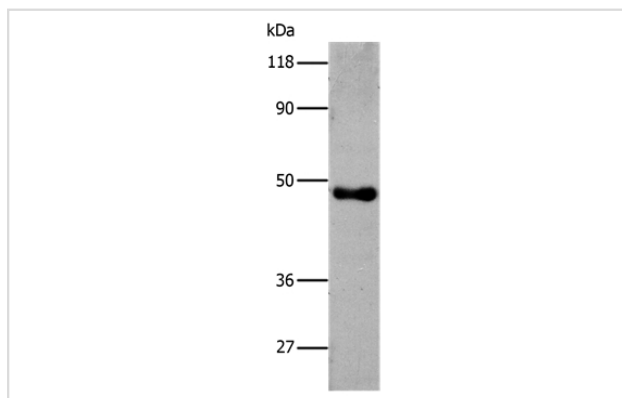
## Description

Product Name	6-His Antibody
Host Species	Rabbit
Clonality	Polyclonal
Purification	Antigen affinity purification.
Applications	WB
Specificity	The antibody detects transfected proteins containing 6-His tag.
Immunogen Type	Peptide
Immunogen Description	Synthetic peptide: 18XHis conjugated to KLH
Target Name	6-His
Other Names	6 His epitope tag
SDS-PAGE MW	46kd
Concentration	0.5mg/ml
Formulation	Rabbit IgG in pH7.4 PBS, 0.05% NaN <sub>3</sub> , 40% Glycerol.
Storage	Store at -20°C

## Application Details

Western blotting: 1:500-1:2000

## Images



Gel: 8%SDS-PAGE  
Lysate: 2ug Recombinant 6-HIS Tagged protein  
Primary antibody: 1/500 dilution  
Secondary antibody dilution: 1/8000  
Exposure time: 5 seconds

## Background

The 6 X histidine motif is used as a tag on many recombinant proteins to facilitate purification. It can then be purified using immobilized metal ions, traditionally nickel, in a procedure termed immobilized-metal affinity chromatography. Further analysis of the protein can be achieved using an antibody specific to the 6 X histidine in techniques such as western blotting. The antibody recognizes the His-tag fused to the carboxy-termini of targeted proteins in transfected or transformed cells.

---

Note: This product is for in vitro research use only