

## HA Tag Antibody

Catalog No: #35534

Orders: [order@signalwayantibody.com](mailto:order@signalwayantibody.com)Support: [tech@signalwayantibody.com](mailto:tech@signalwayantibody.com)

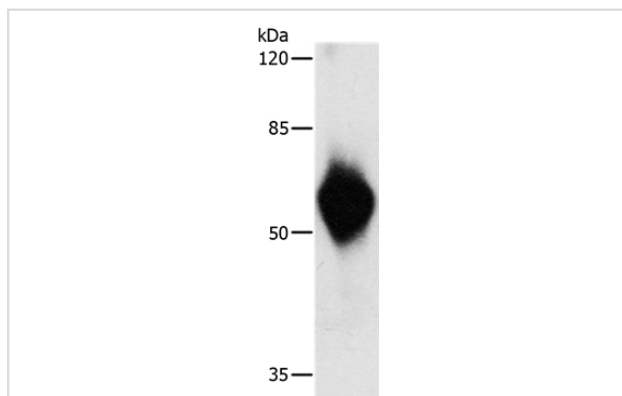
## Description

Product Name	HA Tag Antibody
Host Species	Rabbit
Clonality	Polyclonal
Purification	Antigen affinity purification.
Applications	WB
Specificity	The antibody detects transfected proteins containing HA tag.
Immunogen Type	Peptide
Immunogen Description	Synthetic peptide: YPYDVPDYA (Human influenza hemagglutinin-HA-epitope) conjugated to KLH.
Target Name	HA Tag
Other Names	HA epitope tag; Hemagglutinin Tag
SDS-PAGE MW	55kd
Concentration	0.5mg/ml
Formulation	Rabbit IgG in pH7.4 PBS, 0.05% NaN <sub>3</sub> , 40% Glycerol.
Storage	Store at -20°C

## Application Details

Western blotting: 1:500-1:5000

## Images



Gel: 8%SDS-PAGE  
Lysate: 2ug Recombinant HA tagged protein  
Primary antibody: 1/500 dilution  
Secondary antibody dilution: 1/8000  
Exposure time: 1 second

## Background

Human influenza hemagglutinin (HA) is a surface glycoprotein required for the infectivity of the human virus. The HA tag is derived from the HA-molecule corresponding to amino acids 98-106 has been extensively used as a general epitope tag in expression vectors. Many recombinant proteins have been engineered to express the HA tag, which does not appear to interfere with the bioactivity or the biodistribution of the recombinant protein. This tag facilitates the detection, isolation, and purification of the proteins.

---

Note: This product is for in vitro research use only