

## FLAG tag Antibody

Catalog No: #35535

Orders: [order@signalwayantibody.com](mailto:order@signalwayantibody.com)Support: [tech@signalwayantibody.com](mailto:tech@signalwayantibody.com)

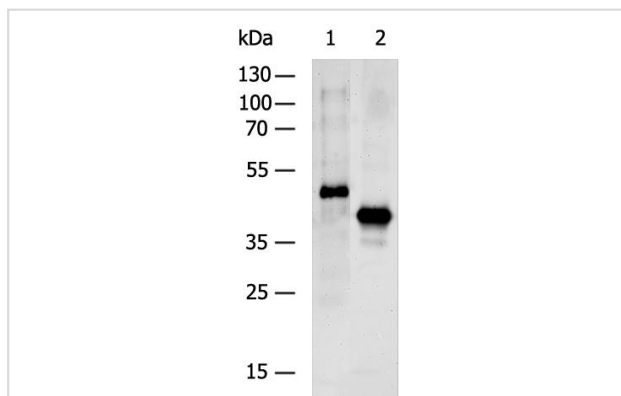
## Description

Product Name	FLAG tag Antibody
Host Species	Rabbit
Clonality	Polyclonal
Purification	Antigen affinity purification.
Applications	WB Elisa
Specificity	The antibody detects transfected proteins containing FLAG tag.
Immunogen Type	Peptide
Immunogen Description	Synthetic peptide: 3*DYKDDDDK conjugated to KLH
Target Name	FLAG tag
Other Names	DDDDK epitope tag; DYKDDDDK epitope tag
SDS-PAGE MW	50/40 kDa
Concentration	0.8mg/ml
Formulation	Rabbit IgG in pH7.4 PBS, 0.05% NaN <sub>3</sub> , 40% Glycerol.
Storage	Store at -20°C

## Application Details

WB 1:10000-1:50000 ELISA:1:5000-1:10000

## Images



Gel: 8%SDS-PAGE

Lysate: 0.1/1  $\Xi$ OgLane 1-2: 0.1/1  $\Xi$ Og Recombinant proteins containing the Flag Tag

Primary antibody: (FLAG Tag Antibody) at dilution 1/10000

Secondary antibody: (HRP-conjugated Goat anti rabbit IgG) at 1/20000 dilution

Exposure time: 30 seconds (Detected by Chemiluminescence Imager)

## Background

The DYKDDDDK peptide has been used extensively as a general epitope tag in expression vectors. Due to its small size, it is unlikely to affect the tagged protein's biochemical properties. This antibody recognizes the DYKDDDDK peptide fused to either the amino- or carboxy-terminus of targeted proteins. (The background information is obtained from official databases and does not represent the product information.)

---

Note: This product is for in vitro research use only