

c-Myc Tag Antibody

Catalog No: #35536

Orders: order@signalwayantibody.comSupport: tech@signalwayantibody.com

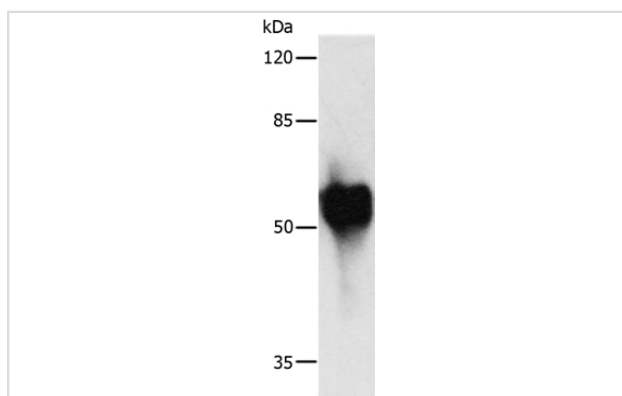
Description

Product Name	c-Myc Tag Antibody
Host Species	Rabbit
Clonality	Polyclonal
Purification	Antigen affinity purification.
Applications	WB
Specificity	The antibody detects transfected proteins containing c-Myc Tag.
Immunogen Type	Peptide
Immunogen Description	Synthetic peptide: C-EQKLISEEDL conjugated with KLH.
Target Name	c-Myc Tag
Other Names	c- Myc epitope Tag
Accession No.	Swiss-Prot:P01106Gene ID:4609
Uniprot	P01106
GeneID	4609;
SDS-PAGE MW	55kd
Concentration	1mg/ml
Formulation	Rabbit IgG in pH7.4 PBS, 0.05% NaN ₃ , 40% Glycerol.
Storage	Store at -20°C

Application Details

Western blotting: 1:1000-1:5000

Images



Gel: 10%SDS-PAGE
 Lysate:2ug Recombinant HA tagged protein
 Primary antibody: 1/1000 dilution
 Secondary antibody dilution: 1/8000
 Exposure time: 1 second

Background

A c-myc tag is a polypeptide protein tag derived from the c-myc gene product that can be added to a protein using recombinant DNA technology. It can be used for affinity chromatography, then used to separate recombinant, overexpressed protein from wild type protein expressed by the host organism. It can also be used in the isolation of protein complexes with multiple subunits. A c-myc tag can be used in many different assays that require recognition by an antibody. If there is no antibody against the studied protein, adding a myc-tag allows one to follow the protein with an

antibody against the Myc epitope. Examples are cellular localization studies by immunofluorescence or detection by Western blotting. It can be fused to the C-terminus and the N-terminus of a protein. It is advisable not to fuse the tag directly behind the signal peptide of a secretory protein, since it can interfere with translocation into the secretory pathway.

Note: This product is for in vitro research use only