

## ACTIN Antibody

Catalog No: #35537

Orders: [order@signalwayantibody.com](mailto:order@signalwayantibody.com)Support: [tech@signalwayantibody.com](mailto:tech@signalwayantibody.com)

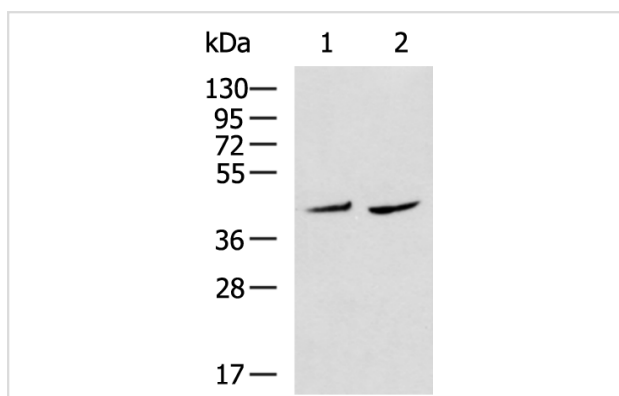
## Description

|                       |                                                                   |
|-----------------------|-------------------------------------------------------------------|
| Product Name          | ACTIN Antibody                                                    |
| Host Species          | Rabbit                                                            |
| Clonality             | Polyclonal                                                        |
| Purification          | Antigen affinity purification.                                    |
| Applications          | WB,ELISA                                                          |
| Species Reactivity    | Plants                                                            |
| Specificity           | The antibody detects endogenous levels of total ACTIN protein.    |
| Immunogen Type        | Peptide                                                           |
| Immunogen Description | Synthetic peptide of Arabidopsis thaliana actin                   |
| Target Name           | ACTIN                                                             |
| Other Names           | ACTB                                                              |
| Accession No.         | Swiss-Prot#: P53497NCBI Gene ID: 823805Gene Accssion: NP_190236.1 |
| Uniprot               | P53497                                                            |
| GeneID                | 823805;                                                           |
| Calculated MW         | 42kDa                                                             |
| Concentration         | 0.7mg/ml                                                          |
| Formulation           | Rabbit IgG in pH7.4 PBS, 0.05% NaN <sub>3</sub> , 40% Glycerol.   |
| Storage               | Store at -20°C                                                    |

## Application Details

Western blotting: 1:500-1:2000

## Images



Gel: 8%SDS-PAGE  
Lysate: 40  $\mu$ g  
Lane 1-2: Corn leaves lysate, Rice leaves lysate  
Primary antibody: ACTIN Antibody at dilution 1/1000  
Secondary antibody: Goat anti rabbit IgG at 1/5000 dilution  
Exposure time: 5 minutes

## Background

Member of actin subclass composed of ACT12 and ACT4. RNA is expressed at very low levels in vegetative organs, low levels in flowers and very high levels in pollen. Expression of an ACT12/GUS fusion was found in vascular tissues, tapetum, developing and mature pollen, the root cap and in a

ring of pericycle tissues during lateral root initiation and early development.

---

Note: This product is for in vitro research use only