

GFP Antibody

Catalog No: #35538

Orders: order@signalwayantibody.com

Support: tech@signalwayantibody.com

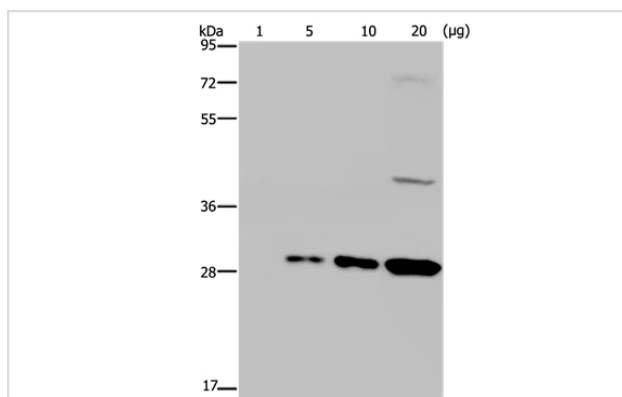
Description

| | |
|-----------------------|---|
| Product Name | GFP Antibody |
| Host Species | Rabbit |
| Clonality | Polyclonal |
| Purification | Antigen affinity purification. |
| Applications | WB |
| Specificity | The antibody detects transfected proteins containing GFP tag. |
| Immunogen Type | Recombinant Protein |
| Immunogen Description | Full length fusion protein |
| Target Name | GFP |
| Other Names | GFP-like chromoprotein |
| Accession No. | Gene Accssion: P42212 |
| SDS-PAGE MW | 27kd |
| Concentration | 1.2mg/ml |
| Formulation | Rabbit IgG in pH7.4 PBS, 0.05% NaN ₃ , 40% Glycerol. |
| Storage | Store at -20°C |

Application Details

Western blotting: 1:1000-1:10000

Images



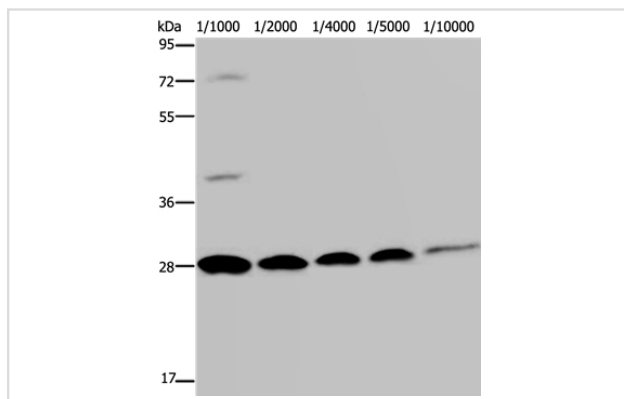
Gel: 8%SDS-PAGE

Lysate: 20ug GFP transfected 293T cell

Primary antibody: 1/800 dilution

Secondary antibody dilution: 1/8000

Exposure time: 30 seconds



Gel: 8%SDS-PAGE
Lysates: 20ug GFP transfected 293T cell per lane
Primary antibody: at various dilution
Secondary antibody dilution: 1/8000
Exposure time: 30 seconds

Background

Green fluorescence protein (GFP) is a 27 kDa protein derived from the jellyfish *Aequorea victoria*, which emits green light (emission peak at a wavelength of 509 nm) when excited by blue light (excitation peak at a wavelength of 395 nm). Green Fluorescent Protein (GFP) has become an invaluable tool in cell biology research, since its intrinsic fluorescence can be visualized in living cells.

Note: This product is for in vitro research use only