

## GST Tag Antibody

Catalog No: #35540

Orders: [order@signalwayantibody.com](mailto:order@signalwayantibody.com)Support: [tech@signalwayantibody.com](mailto:tech@signalwayantibody.com)

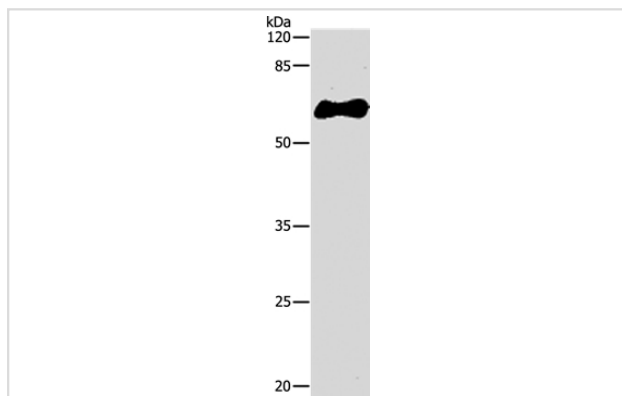
## Description

Product Name	GST Tag Antibody
Host Species	Rabbit
Clonality	Polyclonal
Purification	Antigen affinity purification.
Applications	WB
Specificity	The antibody detects transfected proteins containing GST tag.
Immunogen Type	Recombinant Protein
Immunogen Description	Full length fusion protein
Target Name	GST Tag
SDS-PAGE MW	63kd
Concentration	2.5mg/ml
Formulation	Rabbit IgG in pH7.4 PBS, 0.05% NaN <sub>3</sub> , 40% Glycerol.
Storage	Store at -20°C

## Application Details

Western blotting: 1:1000-1:8000

## Images



Gel: 10%SDS-PAGE  
Lysate: 2ug Recombinant GST tag protein  
Primary antibody: 1/1000 dilution  
Secondary antibody dilution: 1/8000  
Exposure time: 15 seconds

## Background

GST (Glutathione S-Transferase) is a 26kDa protein which was widely used in the pGEX family of GST plasmid expression vectors as a fusion protein with foreign proteins. GST isoenzymes appear to play a central role in the parasite detoxification system. Other functions are also suspected including a role in increasing the solubility of haematin in the parasite gut.

Note: This product is for in vitro research use only