

## STAT6(Phospho-Tyr641) Antibody

Catalog No: #11050

Package Size: #11050-1 50ul #11050-2 100ul

Orders: [order@signalwayantibody.com](mailto:order@signalwayantibody.com)Support: [tech@signalwayantibody.com](mailto:tech@signalwayantibody.com)

## Description

Product Name	STAT6(Phospho-Tyr641) Antibody
Host Species	Rabbit
Clonality	Polyclonal
Purification	Antibodies were produced by immunizing rabbits with synthetic phosphopeptide and KLH conjugates. Antibodies were purified by affinity-chromatography using epitope-specific phosphopeptide. Non-phospho specific antibodies were removed by chromatography using non-phosphopeptide.
Applications	WB IHC
Species Reactivity	Human,Rat,Mouse
Specificity	The antibody detects endogenous level of STAT6 only when phosphorylated at tyrosine 641.
Immunogen Type	Peptide-KLH
Immunogen Description	Peptide sequence around phosphorylation site of Tyrosine 641 (R-G-Y(p)-V-P) derived from Human STAT6.
Target Name	STAT6
Modification	Phospho
Other Names	IL-4 Stat
Accession No.	Swiss-Prot: P42226NCBI Protein: NP_003144.3
Uniprot	P42226
GeneID	6778;
Concentration	1.0mg/ml
Formulation	Supplied at 1.0mg/mL in phosphate buffered saline (without Mg <sup>2+</sup> and Ca <sup>2+</sup> ), pH 7.4, 150mM NaCl, 0.02% sodium azide and 50% glycerol.
Storage	Store at -20°C for long term preservation (recommended). Store at 4°C for short term use.

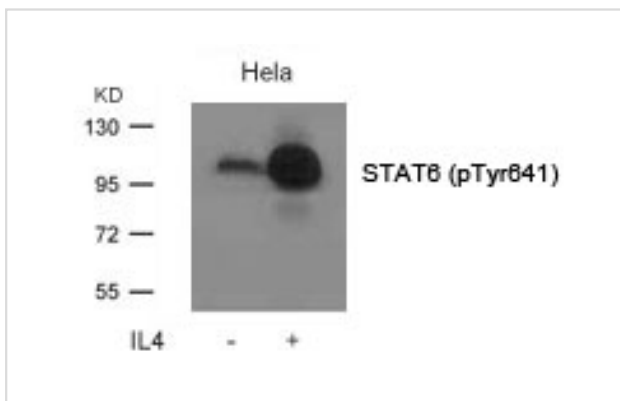
## Application Details

Predicted MW: 110kd

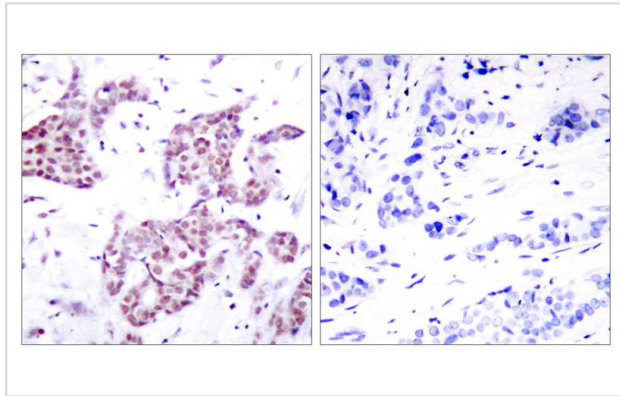
Western blotting: 1:500~1:1000

Immunohistochemistry: 1:50~1:100

## Images



Western blot analysis of extracts from HeLa cells untreated or treated with IL-4 using STAT6(Phospho-Tyr641) Antibody #11050.



Immunohistochemical analysis of paraffin-embedded human breast carcinoma tissue using STAT6(Phospho-Tyr641) Antibody #11050(left) or the same antibody preincubated with blocking peptide(right).

## Background

Carries out a dual function: signal transduction and activation of transcription. Involved in interleukin-4 signalling.

Nelms K, et al. (1999) *Annu Rev Immunol.* 17:701-738.

Malabarba M G, et al. (1996) *Biochem. J.* 319:865-872.

Hou J, et al. (1994) *Science.* 265:1701-1706.

Quelle F W, et al. (1995) *Mol Cell Biol.* 15: 3336-3343.

Takeda K, et al. (1996) *Nature.* 380: 627-630.

Note: This product is for in vitro research use only