

KLK3 Antibody

Catalog No: #35547

Orders: order@signalwayantibody.comSupport: tech@signalwayantibody.com

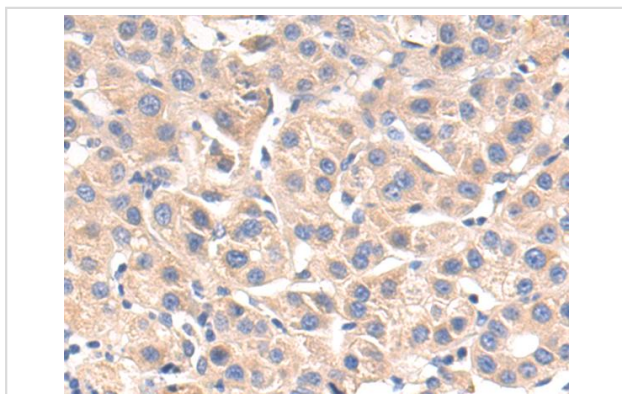
Description

Product Name	KLK3 Antibody
Host Species	Rabbit
Clonality	Polyclonal
Purification	Antigen affinity purification.
Applications	IHC
Species Reactivity	Hu
Specificity	The antibody detects endogenous levels of total KLK3 protein.
Immunogen Type	Recombinant Protein
Immunogen Description	Fusion protein of human KLK3
Target Name	KLK3
Other Names	APS; PSA
Accession No.	Swiss-Prot#: P07288NCBI Gene ID: 354Gene Accssion: BC005307
Uniprot	P07288
GeneID	354;
Concentration	0.8mg/ml
Formulation	Rabbit IgG in pH7.4 PBS, 0.05% NaN ₃ , 40% Glycerol.
Storage	Store at -20°C

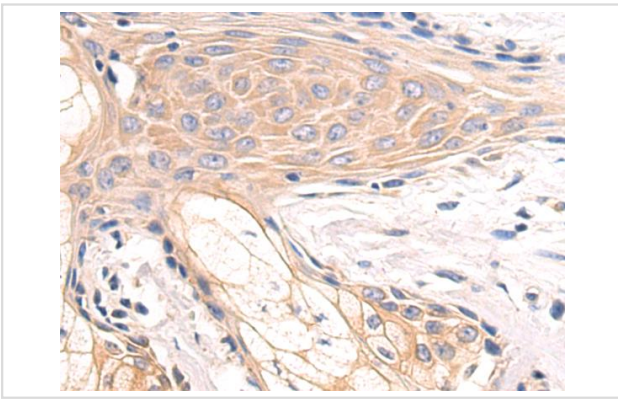
Application Details

IHC 1:50-200

Images



The image is immunohistochemistry of paraffin-embedded Human liver cancer tissue using (KLK3 Antibody) at dilution 1/55.



The image is immunohistochemistry of paraffin-embedded Human breast cancer tissue using (KLK3 Antibody) at dilution 1/55

Background

KLK3 is a member of the kallikrein-related peptidase family secreted by the epithelial cells of the prostate gland and lead to the liquefaction of the seminal coagulum. It is thought to function normally in the liquefaction of seminal coagulum, presumably by hydrolysis of the high molecular mass seminal vesicle protein. Serum level of this protein, called PSA in the clinical setting, is useful in the diagnosis and monitoring of prostatic carcinoma.

Note: This product is for in vitro research use only