

CASP9 Antibody

Catalog No: #35571

Orders: order@signalwayantibody.comSupport: tech@signalwayantibody.com

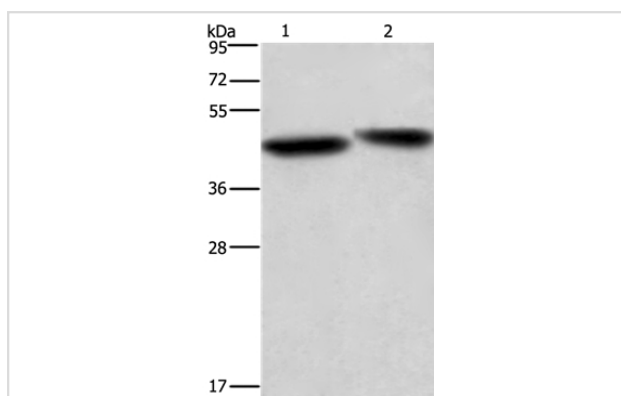
Description

Product Name	CASP9 Antibody
Host Species	Rabbit
Clonality	Polyclonal
Purification	Antigen affinity purification.
Applications	WB
Species Reactivity	Hu Ms
Specificity	The antibody detects endogenous levels of total CASP9 protein.
Immunogen Type	Recombinant Protein
Immunogen Description	Fusion protein corresponding to a region derived from internal residues of human Caspase-9
Target Name	CASP9
Other Names	MCH6; APAF3; APAF-3; PPP1R56; ICE-LAP6
Accession No.	Swiss-Prot#: P55211NCBI Gene ID: 842Gene Accssion: BC002452
Uniprot	P55211
GeneID	842;
SDS-PAGE MW	46kd
Concentration	1.6mg/ml
Formulation	Rabbit IgG in pH7.4 PBS, 0.05% NaN ₃ , 40% Glycerol.
Storage	Store at -20°C

Application Details

Western blotting: 1:500-1:1000

Images



Gel: 8%SDS-PAGE
 Lysates (from left to right): HepG2 and Hela cell
 Amount of lysate: 20ug per lane
 Primary antibody: 1/500 dilution
 Secondary antibody dilution: 1/8000
 Exposure time: 1 minute

Background

This gene encodes a member of the cysteine-aspartic acid protease (caspase) family. Sequential activation of caspases plays a central role in the execution-phase of cell apoptosis. Caspases exist as inactive proenzymes which undergo proteolytic processing at conserved aspartic residues to

produce two subunits, large and small, that dimerize to form the active enzyme. This protein is processed by caspase APAF1; this step is thought to be one of the earliest in the caspase activation cascade. Alternative splicing results in two transcript variants which encode different isoforms.

Note: This product is for in vitro research use only