

IL21R Antibody

Catalog No: #35607

Orders: order@signalwayantibody.comSupport: tech@signalwayantibody.com

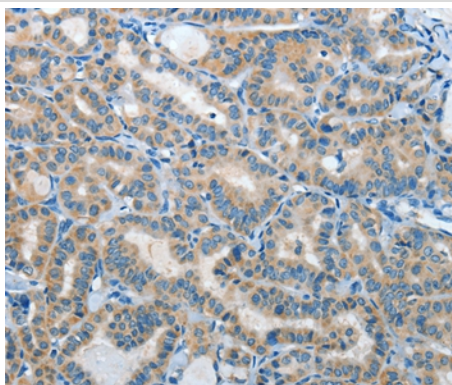
Description

Product Name	IL21R Antibody
Host Species	Rabbit
Clonality	Polyclonal
Purification	Antigen affinity purification.
Applications	IHC
Species Reactivity	Hu
Specificity	The antibody detects endogenous levels of total IL21R protein.
Immunogen Type	Recombinant Protein
Immunogen Description	Fusion protein corresponding to a region derived from internal residues of human interleukin 21 receptor
Target Name	IL21R
Other Names	NILR; CD360
Accession No.	Swiss-Prot#: Q9HBE5NCBI Gene ID: 50615Gene Accssion: BC004348
Uniprot	Q9HBE5
GeneID	50615;
Concentration	1.5mg/ml
Formulation	Rabbit IgG in pH7.4 PBS, 0.05% NaN ₃ , 40% Glycerol.
Storage	Store at -20°C

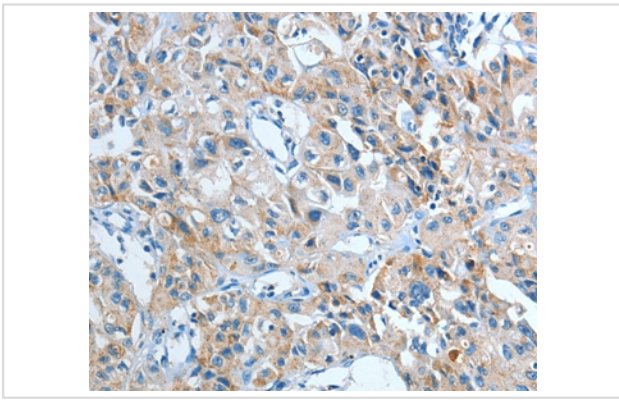
Application Details

Immunohistochemistry: 1:25-1:100

Images



Immunohistochemical analysis of paraffin-embedded Human thyroid cancer tissue using #35607 at dilution 1/40.



Immunohistochemical analysis of paraffin-embedded Human lung cancer tissue using #35607 at dilution 1/40.

Background

The protein encoded by this gene is a cytokine receptor for interleukin 21 (IL21). It belongs to the type I cytokine receptors, and has been shown to form a heterodimeric receptor complex with the common gamma-chain, a receptor subunit also shared by the receptors for interleukin 2, 4, 7, 9, and 15. This receptor transduces the growth promoting signal of IL21, and is important for the proliferation and differentiation of T cells, B cells, and natural killer (NK) cells. The ligand binding of this receptor leads to the activation of multiple downstream signaling molecules, including JAK1, JAK3, STAT1, and STAT3. Knockout studies of a similar gene in mouse suggest a role for this gene in regulating immunoglobulin production. Three alternatively spliced transcript variants have been described.?

Note: This product is for in vitro research use only