

## EIF4EBP1 Antibody

Catalog No: #35610

Orders: order@signalwayantibody.com

Support: tech@signalwayantibody.com

## Description

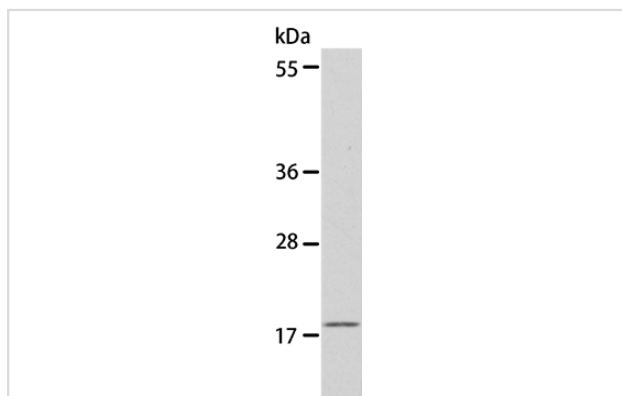
Product Name	EIF4EBP1 Antibody
Host Species	Rabbit
Clonality	Polyclonal
Purification	Antigen affinity purification.
Applications	WB IHC
Species Reactivity	Hu
Specificity	The antibody detects endogenous levels of total EIF4EBP1 protein.
Immunogen Type	Recombinant Protein
Immunogen Description	Fusion protein corresponding to residues near the N terminal of human eukaryotic translation initiation factor 4E binding protein 1
Target Name	EIF4EBP1
Other Names	BP-1; 4EBP1; 4E-BP1; PHAS-I
Accession No.	Swiss-Prot#: Q13541NCBI Gene ID: 1978Gene Accssion: BC004459
Uniprot	Q13541
GeneID	1978;
SDS-PAGE MW	13kd
Concentration	2mg/ml
Formulation	Rabbit IgG in pH7.4 PBS, 0.05% NaN <sub>3</sub> , 40% Glycerol.
Storage	Store at -20°C

## Application Details

Western blotting: 1:200-1:1000

Immunohistochemistry: 1:50-1:200

## Images



Gel: 8+12%SDS-PAGE  
 Lysate: 40ug 293T cell  
 Primary antibody: 1/530 dilution  
 Secondary antibody dilution: 1/8000  
 Exposure time: 1 minute



Immunohistochemical analysis of paraffin-embedded Human colon cancer tissue using #35610 at dilution 1/50.

## Background

This gene encodes one member of a family of translation repressor proteins. The protein directly interacts with eukaryotic translation initiation factor 4E (eIF4E), which is a limiting component of the multisubunit complex that recruits 40S ribosomal subunits to the 5' end of mRNAs. Interaction of this protein with eIF4E inhibits complex assembly and represses translation. This protein is phosphorylated in response to various signals including UV irradiation and insulin signaling, resulting in its dissociation from eIF4E and activation of mRNA translation.

Note: This product is for in vitro research use only