

## CCL24 Antibody

Catalog No: #35671

Orders: [order@signalwayantibody.com](mailto:order@signalwayantibody.com)Support: [tech@signalwayantibody.com](mailto:tech@signalwayantibody.com)

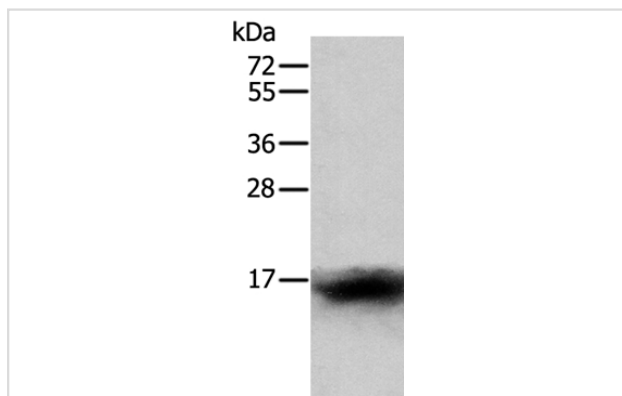
## Description

Product Name	CCL24 Antibody
Host Species	Rabbit
Clonality	Polyclonal
Purification	Antigen affinity purification.
Applications	WB
Species Reactivity	Hu
Specificity	The antibody detects endogenous levels of total CCL24 protein.
Immunogen Type	Recombinant Protein
Immunogen Description	Fusion protein corresponding to a region derived from internal residues of human chemokine (C-C motif) ligand 24
Target Name	CCL24
Other Names	Ckb-6; MPIF2; MPIF-2; SCYA24
Accession No.	Swiss-Prot#: O00175NCBI Gene ID: 6369Gene Accssion: BC069391
Uniprot	O00175
GeneID	6369;
SDS-PAGE MW	13kd
Concentration	0.8mg/ml
Formulation	Rabbit IgG in pH7.4 PBS, 0.05% NaN <sub>3</sub> , 40% Glycerol.
Storage	Store at -20°C

## Application Details

Western blotting: 1:200-1:1000

## Images



Gel: 12%SDS-PAGE  
 Lysates (from left to right): Human lymphoma tissue  
 Amount of lysate: 40ug per lane  
 Primary antibody: 1/400 dilution  
 Secondary antibody dilution: 1/8000  
 Exposure time: 1 minute

## Background

This gene belongs to the subfamily of small cytokine CC genes. Cytokines are a family of secreted proteins involved in immunoregulatory and

inflammatory processes. The CC cytokines are proteins characterized by two adjacent cysteines. The cytokine encoded by this gene displays chemotactic activity on resting T lymphocytes, a minimal activity on neutrophils, and is negative on monocytes and activated T lymphocytes. The protein is also a strong suppressor of colony formation by a multipotential hematopoietic progenitor cell line.

---

Note: This product is for in vitro research use only