

## CEACAM8 Antibody

Catalog No: #35678

Orders: order@signalwayantibody.com

Support: tech@signalwayantibody.com

## Description

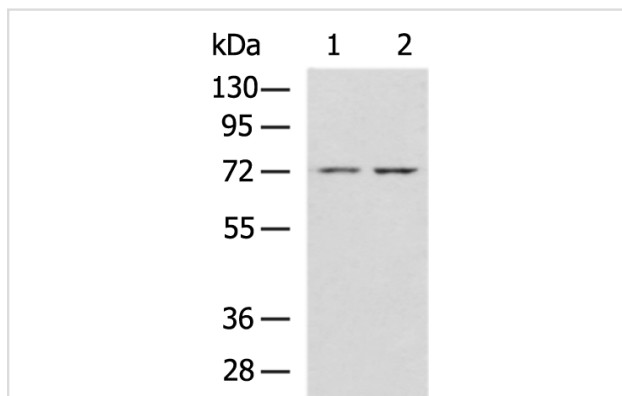
Product Name	CEACAM8 Antibody
Host Species	Rabbit
Clonality	Polyclonal
Purification	Protein G Purified
Applications	ELISA, IHC
Species Reactivity	Hu
Specificity	The antibody detects endogenous levels of total CEACAM8 protein.
Immunogen Type	Protein
Immunogen Description	Fusion protein of human CEACAM8
Target Name	CEACAM8
Other Names	CD67; CGM6; CD66b; NCA-95
Accession No.	Swiss-Prot#: P31997NCBI Gene ID: 1088Gene Accssion: BC026263
Uniprot	P31997
GeneID	1088;
Calculated MW	38kDa
Concentration	0.8mg/ml
Formulation	Rabbit IgG in pH7.4 PBS, 0.05% NaN <sub>3</sub> , 40% Glycerol.
Storage	Store at -20°C

## Application Details

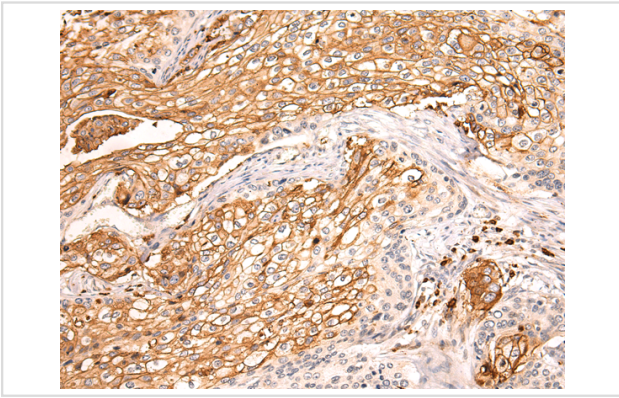
Immunohistochemistry: 1:50-1:100

WB dilution: 1:200-1:1000

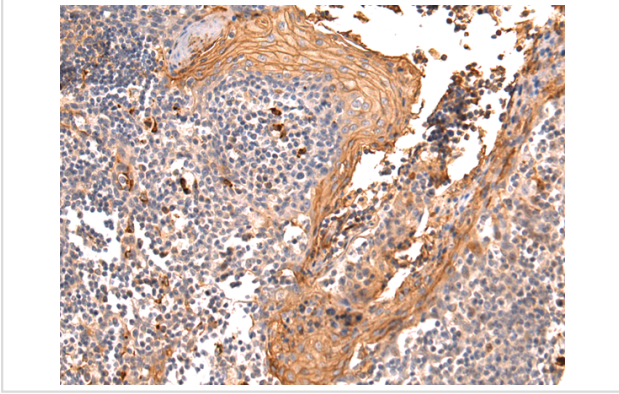
## Images



Gel: 8%SDS-PAGE Lysate: 40  $\mu$ g Lane 1-2: A431 and HepG2 cell lysates  
 Primary antibody: CEACAM8 Antibody at dilution 1/500  
 Secondary antibody: Goat anti rabbit IgG at 1/5000 dilution  
 Exposure time: 2 minutes



The image is immunohistochemistry of paraffin-embedded Human cervical cancer tissue using CEACAM8 Antibody at dilution 1/50. (Original magnification:  $\times 200$ )



The image is immunohistochemistry of paraffin-embedded Human tonsil tissue using CEACAM8 Antibody at dilution 1/50. (Original magnification:  $\times 200$ )

## Background

Carcinoembryonic antigen-related cell adhesion molecule 8 (CEACAM8) also known as CD66b (Cluster of Differentiation 66b), is a human gene. In neutrophils, the CEACAM8 gene is primarily detected in the secondary granules within the cytoplasm, but it can also be found in lower amounts on the plasma membrane. The amount of CD67 on the plasma membrane is up-regulated upon granulocyte activation. CD67 has been located on the surface of neutrophilic and eosinophilic granulocytes at late stages of differentiation.

Note: This product is for in vitro research use only